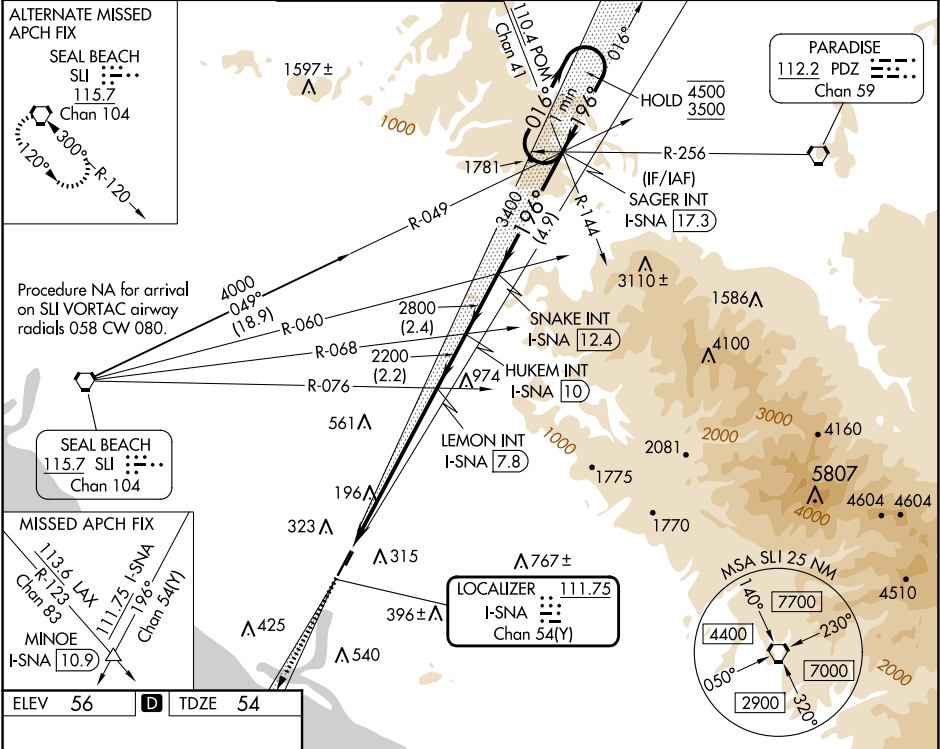


LOC/DME I-SNA 111.75 Chan 54(Y)	APP CRS 196°	Rwy Ldg TDZE Apt Elev	5700 54 56
---	------------------------	-----------------------------	---------------------------------------

ILS RWY 20R (SA CAT I)
JOHN WAYNE/ORANGE COUNTY (SNA)

 Requires specific OPSPEC, MSPEC, or LOA approval. Procedure NA when tower closed.	 MALSR	MISSED APPROACH: Climb to 3000 on I-SNA LOC south course (196°) to MINOE INT/I-SNA 10.9 DME.
---	--	---

D-ATIS 126.0	SOCAL APP CON 121.3 263.1	JOHN WAYNE TOWER ★ 126.8 (CTAF) 343.625	GND CON 120.8	CLNC DEL 118.0	CPDLC	UNICOM 122.95
------------------------	-------------------------------------	---	-------------------------	--------------------------	-------	-------------------------



SW-3, 07 AUG 2025 to 04 SEP 2025

SW-3, 07 AUG 2025 to 04 SEP 2025