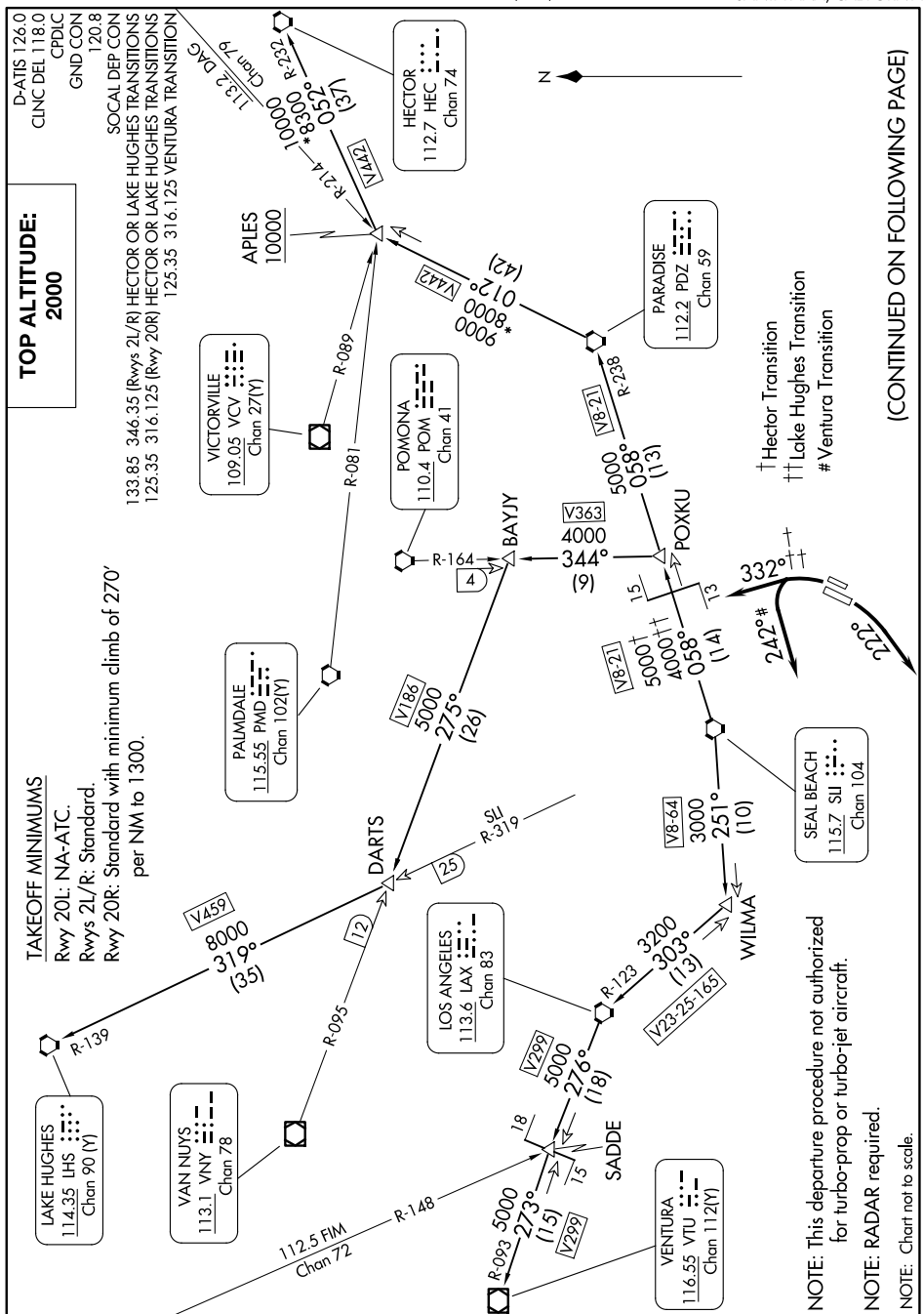


ANAHEIM ONE DEPARTURE

JOHN WAYNE/ORANGE COUNTY (SNA)
AL-377 (FAA) SANTA ANA, CALIFORNIA



(CONTINUED ON FOLLOWING PAGE)

NOTE: This departure procedure not authorized for turbo-prop or turbo-jet aircraft.

NOTE: RADAR required.

NOTE: Chart not to scale.

SW-3, 07 AUG 2025 to 04 SEP 2025