



SAN FRANCISCO, CALIFORNIA

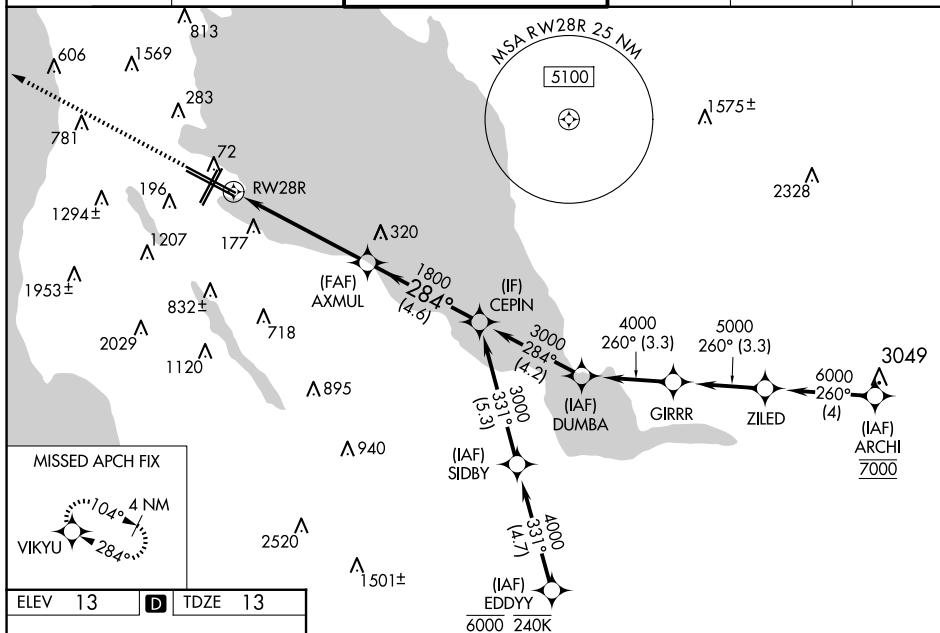
AL-375 (FAA)

25163

WAAS CH 48803 W28A	APP CRS 284°	Rwy Ldg 11236 TDZE 13 Apt Elev 13
--	------------------------	--

RNAV (GPS) Z RWY 28R
SAN FRANCISCO INTL (SFO)

RNP APCH - GPS.  Circling NA to Rwys 10L, 10R, 19L, and 19R. Circling Rwy 1L, 1R NA at night. For uncompensated Baro-VNAV systems, LNAV/VNAV NA below 4°C or above 54°C. For Inop ALS, increase LNAV/VNAV all Cats visibility to 1 1/4 SM, increase LNAV Cat C/D visibility to 2 SM.		ALSF-2 	MISSED APPROACH: Climb to 3000 direct VIKYU and hold. *Missed approach requires minimum climb of 350 feet per NM to 1900; if unable to meet climb gradient, see RNAV (GPS) RWY 28L.			
D-ATIS 113.7 115.8 118.85	NORCAL APP CON 134.5 338.2	SAN FRANCISCO TOWER 120.5 269.1		GND CON 121.8	CLNC DEL 118.2	CPDLC



3000

VIKYU

VGSI and RNAV glidepath not coincident (VGSI Angle 3.00°/TCH 68).

CEPIN

3000

GP 3.00° TCH 55

AXMUL

1800

284°

1800

2.1 NM to RW28R

RW28R

2.1 NM

3.3 NM

4.6 NM

CATEGORY	A	B	C	D
LPV DA*	213/18		200 (200-1/2)	
LNAV/VNAV DA	642-1 3/8		629 (700-1 3/8)	
LNAV MDA	760/24 747 (800-1/2)	760/40 747 (800-3/4)	760-1 3/4	747 (800-1 3/4)
C CIRCLING	760-1 747 (800-1)	1020-1 1/2 1007 (1100-1 1/2)	1640-3 1627 (1700-3)	NA

TDZ/CL Rwy's 19L and 28R
REIL Rwy's 1L, 1R and 10L
HIRL all Rwy's

SAN FRANCISCO, CALIFORNIA
Amdt 8 31OCT24

37°37'N-122°23'W

SAN FRANCISCO INTL (SFO)

RNAV (GPS) Z RWY 28R

SW-2, 07 AUG 2025 to 04 SEP 2025

SW-2, 07 AUG 2025 to 04 SEP 2025