

WAAS CH 57945 W19D	APP CRS 194°	Rwy Ldg 7650 TDZE 11 Apt Elev 13
--	------------------------	---

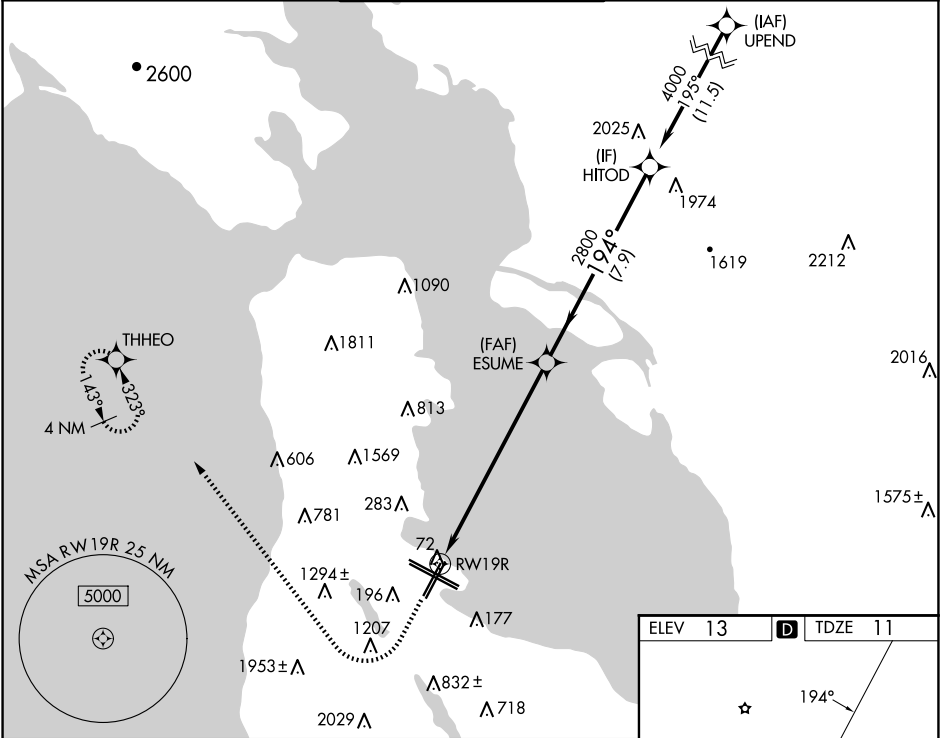
RNAV (GPS) Z RWY 19R
SAN FRANCISCO INTL (SFO)

RNP APCH - GPS.

Simultaneous approach authorized. Simultaneous operations require use of vertical guidance; maintain last assigned altitude until established on glidepath. For uncompensated Baro-VNAV systems, LNAV/VNAV NA below 4°C or above 54°C. Simultaneous approach NA below 12°C (52°F). Use of FD or AP required during simultaneous operations.

MISSED APPROACH: Climb to 600 then climbing right turn to 3000 direct THHEO and hold.
*Missed approach requires minimum climb of 395 feet per NM to 2100; if unable to meet climb gradient, see RNAV (GPS) Y RWY 19R.

D-ATIS 113.7 115.8 118.85	NORCAL APP CON 134.5 338.2	SAN FRANCISCO TOWER 120.5 269.1	GND CON 121.8	CLNC DEL 118.2	CPDLC
---	--------------------------------------	---	-------------------------	--------------------------	-------



600

3000

THHEO

RW19R

ESUME

HITOD

194°

2800

4000

GP 3.15°

TCH 55

8.2 NM

7.9 NM

CATEGORY	A	B	C	D
LPV	DA*	317/45	306 (400-7%)	
LNAV/VNAV	DA*	328/45	317 (400-7%)	

TDZ/CL Rwy 19L and 28R

REIL Rwy 1L, 1R and 10L

HIRL all Rwy

SW-2, 07 AUG 2025 to 04 SEP 2025

SW-2, 07 AUG 2025 to 04 SEP 2025