

SAN FRANCISCO, CALIFORNIA

AL-375 (FAA)

25163

APP CRS	Rwy Ldg	10704
104°	TDZE	10
	Apt Elev	13

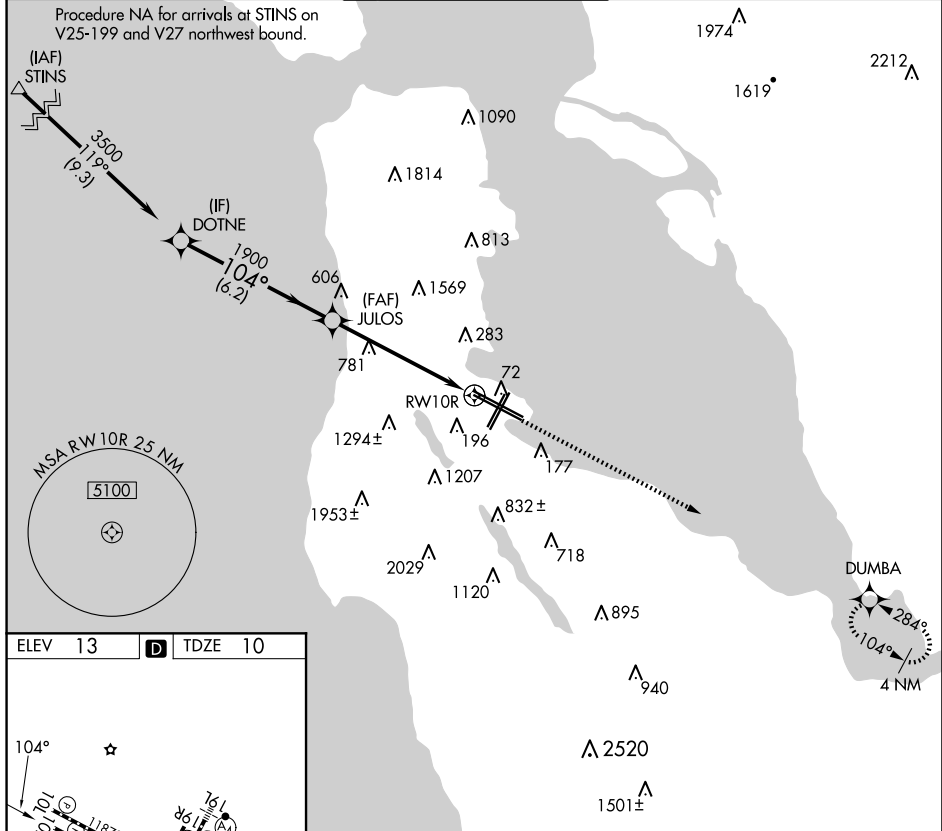
RNAV (GPS) Y RWY 10R
SAN FRANCISCO INTL (SFO)

T
A DME/DME RNP-0.3 NA. When VGSI inop, procedure NA at night. Helicopter visibility reduction below RVR 5000 NA.

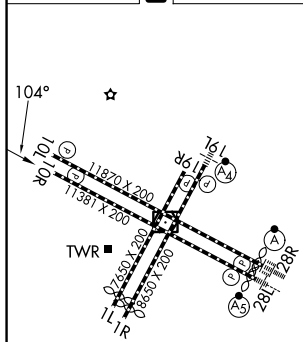
MISSED APPROACH: Climb to 4000 direct DUMBA and hold.

D-ATIS 113.7 115.8 118.85	NORCAL APP CON 134.5 338.2	SAN FRANCISCO TOWER 120.5 269.1	GND CON 121.8	CLNC DEL 118.2	CPDLC
---	--------------------------------------	---	-------------------------	--------------------------	-------

Procedure NA for arrivals at STINS on V25-199 and V27 northwest bound.

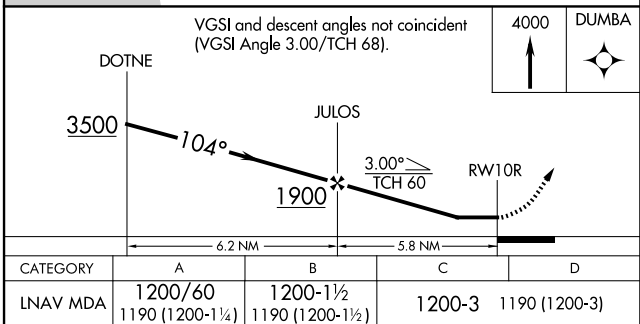


ELEV	13	D	TDZE	10
------	----	----------	------	----



TDZ/CL Rwy's 19L and 28R
REIL Rwy's 1L, 1R and 10L
HIRL all Rwy's

VGSI and descent angles not coincident
(VGSI Angle 3.00/TCH 68).



SAN FRANCISCO, CALIFORNIA
Amdt 2A 26JUN14

37°37'N-122°23'W

SAN FRANCISCO INTL (SFO)

RNAV (GPS) Y RWY 10R

SW-2, 07 AUG 2025 to 04 SEP 2025

SW-2, 07 AUG 2025 to 04 SEP 2025