

APP CRS  
104°

Rwy Ldg  
10704

TDZE  
10

Apt Elev  
13

RNAV (RNP) Z RWY 10R

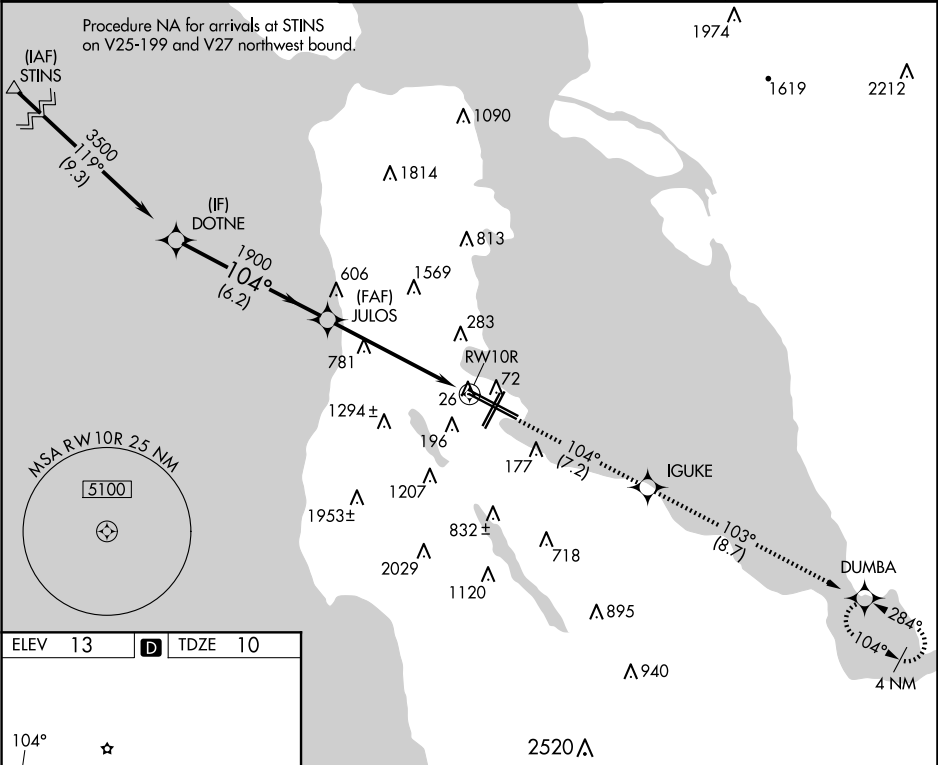
SAN FRANCISCO INTL (SFO)

⚠

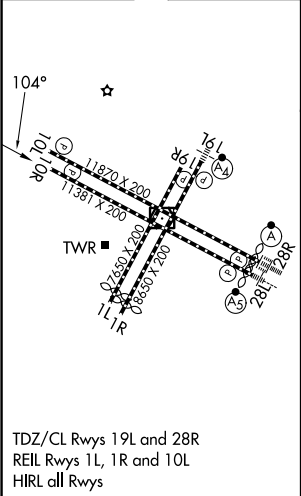
For uncompensated Baro-VNAV systems, procedure NA below 2°C (36°F) or above 54°C (130°F). GPS required. When VGSi inop, procedure NA at night.

MISSED APPROACH: Climb to 3600 on track 104° to IGUKE and on track 103° to DUMBA and hold.

D-ATIS 113.7 115.8 118.85	NORCAL APP CON 134.5 338.2	SAN FRANCISCO TOWER 120.5 269.1	GND CON 121.8	CLNC DEL 118.2	CPDLC
---------------------------------	-------------------------------	------------------------------------	------------------	-------------------	-------



ELEV 13	<b>D</b>	TDZE 10
---------	----------	---------



TDZ/CL Rwy's 19L and 28R  
REIL Rwy's 1L, 1R and 10L  
HIRL all Rwy's

VGSi and RNAV glidepath not coincident (VGSi Angle 3.00/TCH 68).

3600 tr 104°	IGUKE	tr 103°	DUMBA
-----------------	-------	---------	-------

GP 3.00°  
TCH 60

DOTNE 3500  
JULOS 1900  
RWY 10R

6.2 NM 5.8 NM

CATEGORY	A	B	C	D
RNP 0.20 DA	396-1¼ 386 (400-1¼)			
RNP 0.30 DA	1108-4 1098 (1100-4)			

**AUTHORIZATION REQUIRED**