

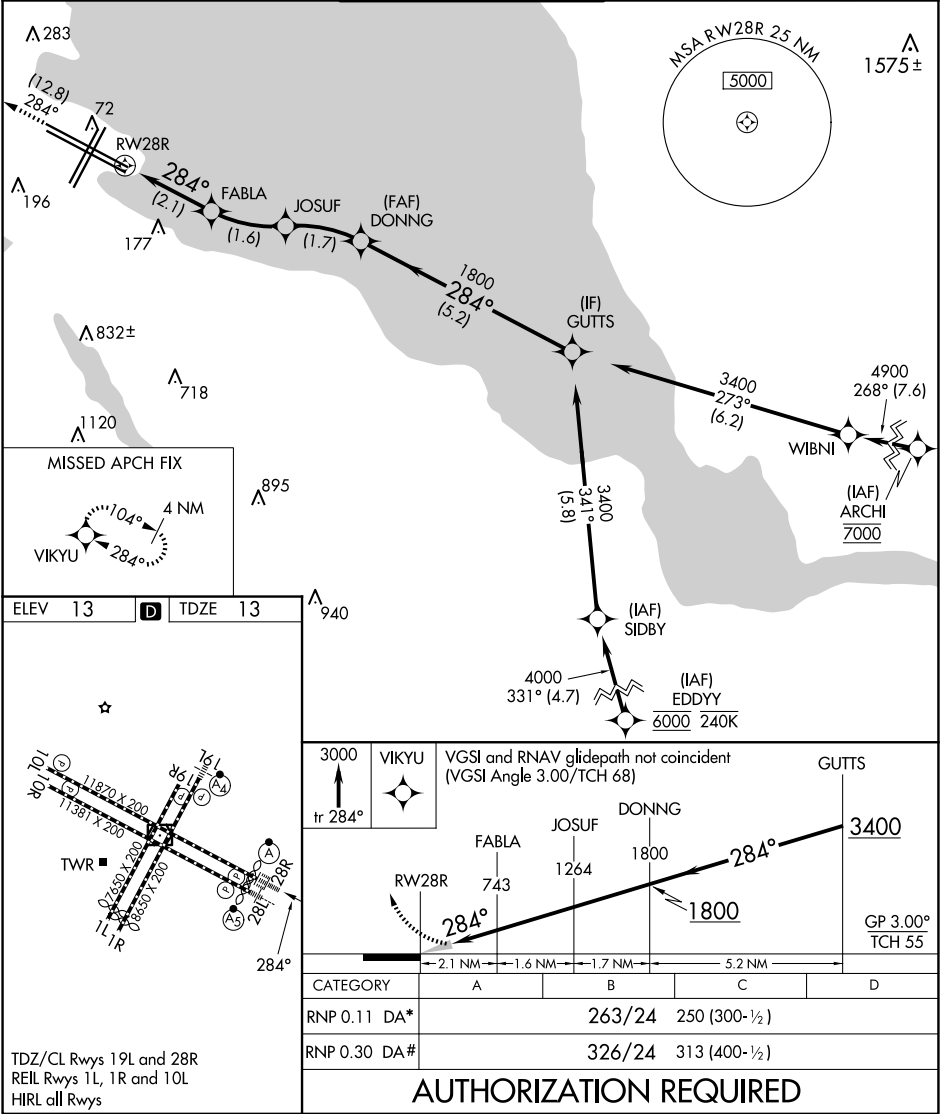


APP CRS	Rwy Ldg	11236
284°	TDZE	13
	Apt Elev	13

RNAV (RNP) Y RWY 28R
SAN FRANCISCO INTL (SFO)

RNP AR APCH, RF required.		ALSF-2 	MISSED APPROACH: Climb to 3000 on track 284° to VIKYU and hold. *Missed approach requires minimum climb of 250 feet per NM to 1600. #Missed approach requires minimum climb of 350 feet per NM to 2100.		
 For uncompensated Baro-VNAV systems, procedure NA below 3°C or above 54°C. For inop ALS, increase RNP 0.11 all Cats visibility to RVR 4000 and RNP 0.30 all Cats visibility to RVR 4500.					
D-ATIS 113.7 115.8 118.85	NORCAL APP CON 134.5 338.2	SAN FRANCISCO TOWER 120.5 269.1	GND CON 121.8	CLNC DEL 118.2	CPDLC



SW-2, 07 AUG 2025 to 04 SEP 2025

SW-2, 07 AUG 2025 to 04 SEP 2025