

RISTI ONE ARRIVAL (RNAV)

AL-375 (FAA)

SAN FRANCISCO, CALIFORNIA

NORCAL APP CON

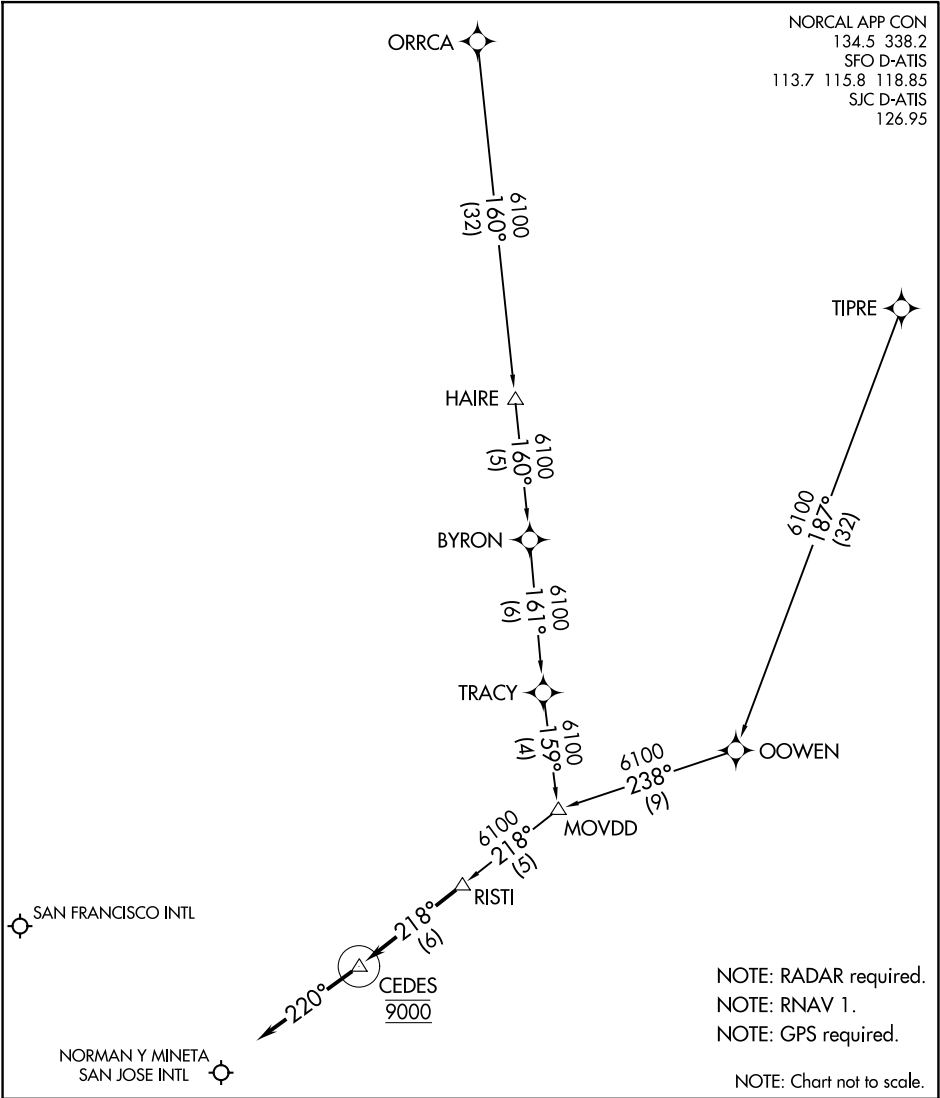
134.5 338.2

SFO D-ATIS

113.7 115.8 118.85

SJC D-ATIS

126.95



ARRIVAL ROUTE DESCRIPTION

ORRCA TRANSITION (ORRCA.RISTI1)

TIPRE TRANSITION (TIPRE.RISTI1)

LANDING KSFO/KSJC: From RISTI on track 218° to cross CEDES at 9000, then on heading 220° or as assigned by ATC. Expect RADAR vectors to final approach course.

RISTI ONE ARRIVAL (RNAV)

SAN FRANCISCO, CALIFORNIA