

SAN FRANCISCO, CALIFORNIA

AL-375 (FAA)

25163

WAAS CH <b>53415</b> <b>W28B</b>	APP CRS <b>284°</b>	Rwy Ldg <b>10275</b> TDZE <b>13</b> Apt Elev <b>13</b>
--	------------------------	--

## RNAV (GPS) RWY 28L

SAN FRANCISCO INTL (SFO)

RNP APCH.

**T** For uncompensated Baro-VNAV systems, LNAV/VNAV NA below 3°C or above 54°C. For inop ALS, increase LPV 1 all Cats visibility to 2½ SM, increase LNAV/VNAV all Cats visibility to 2 SM. Circling NA to Rwy's 10L, 10R, 19L, and 19R. Circling Rwy 1L, 1R NA at night.  
**A** #RVR 1800 authorized with use of FD or AP or HUD to DA.

MAISR



**MISSED APPROACH:** Climb to 1020 then climbing left turn to 4000 direct OLYMM and hold, continue climb-in-hold to 4000. #Missed approach requires minimum climb of 330 feet per NM to 1600.

D-ATIS <b>113.7 115.8</b> <b>118.85</b>	NORCAL APP CON <b>134.5 338.2</b>	SAN FRANCISCO TOWER <b>120.5 269.1</b>	GND CON <b>121.8</b>	CLNC DEL <b>118.2</b>	CPDLC
---	--------------------------------------	---	-------------------------	--------------------------	-------

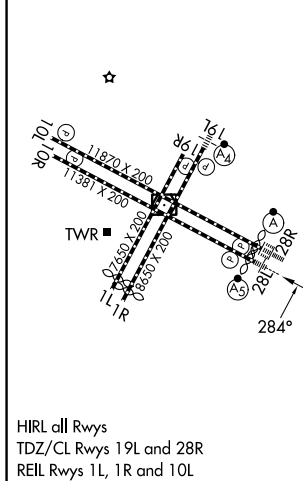
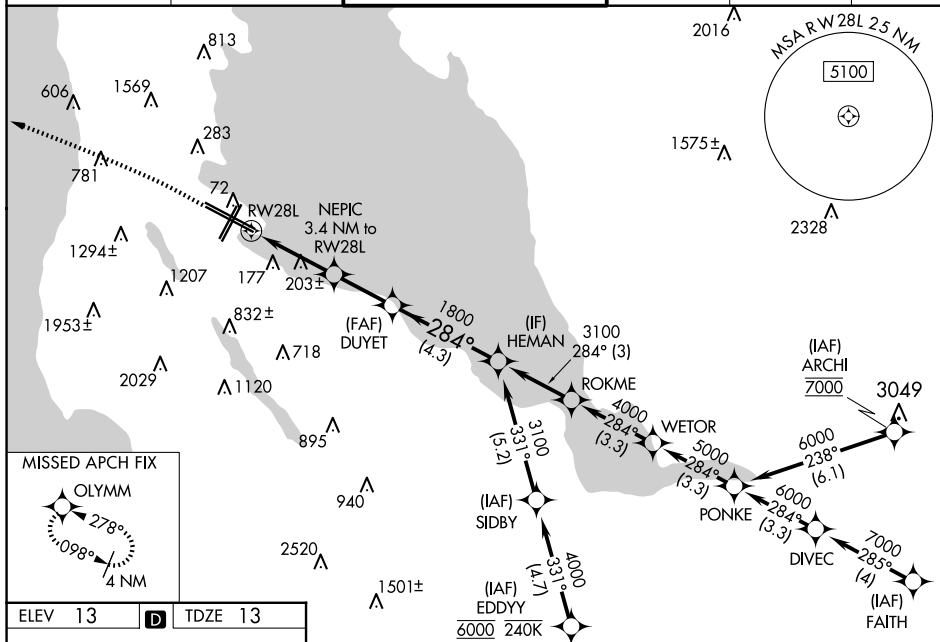


Diagram illustrating the VGS1 and RNAV glidepath not coincident (VGS1 Angle 2.85°/TCH 67°). The diagram shows a horizontal line representing the glidepath, with a vertical line labeled 'HEMAN' at the right end. A point 'DUEY' is marked on the glidepath. A point 'NEPIC' is marked 3.4 NM to the left of DUEY. A point 'RW28L' is marked further left. A dashed line connects RW28L to DUEY, with an angle of 284° indicated. A solid line connects DUEY to HEMAN, with an angle of 1800° indicated. A distance of 1080\* is marked between RW28L and DUEY. A distance of 1800 is marked between DUEY and HEMAN. A distance of 3.4 NM is marked between RW28L and NEPIC. A distance of 2.4 NM is marked between NEPIC and DUEY. A distance of 4.3 NM is marked between DUEY and HEMAN. A distance of 3100 is marked between HEMAN and a point further right. A distance of 1020/40 is marked between RW28L and NEPIC. A distance of 1007 (1100-3/4) is marked between NEPIC and DUEY. A distance of 1020/55 is marked between DUEY and HEMAN. A distance of 1020-2 1/2 is marked between HEMAN and a point further right. A distance of 1007 (1100-2 1/2) is marked between the point further right and the end of the diagram. A distance of 1020-1 1/4 is marked between RW28L and NEPIC. A distance of 1020-1 1/2 is marked between NEPIC and DUEY. A distance of 1560-3 is marked between DUEY and HEMAN. A distance of 1547 (1600-3) is marked between HEMAN and the point further right. A distance of NA is marked between the point further right and the end of the diagram.

SAN FRANCISCO, CALIFORNIA

Amdt 7 13SEP18

37°37'N-122°23'W

SAN FRANCISCO INTL (SFO)

RNAV (GPS) RWY 28L

SW-2, 07 AUG 2025 to 04 SEP 2025