

NIITE FOUR DEPARTURE (RNAV)

AL-375 (FAA)

SAN FRANCISCO INTL (SFO)
SAN FRANCISCO, CALIFORNIA

NORCAL DEP CON
120.9 323.2
D-ATIS
113.7 115.8 118.85
CLNC DEL
118.2
CPDLC
GND CON
121.8
SAN FRANCISCO TOWER
120.5 269.1

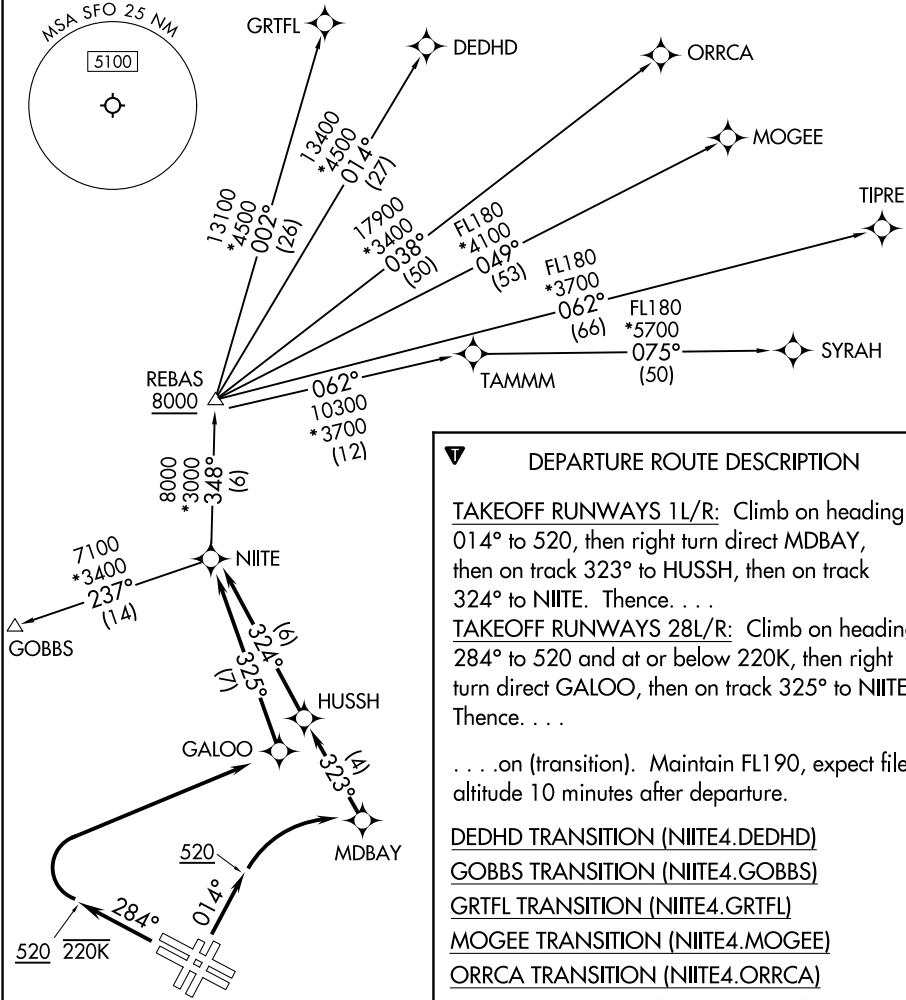
RNAV 1 - DME/DME/IRU or GPS.
RADAR required.

TOP ALTITUDE:
FL190

TAKEOFF MINIMUMS

Rwys 1L/R: Standard with minimum climb of 500'/NM to 520.
Rwys 10L/R, 19L/R: NA-ATC.
Rwy 28L: Standard with minimum climb of 535'/NM to 2100.
Rwy 28R: Standard with minimum climb of 560'/NM to 2100.

SW-2, 07 AUG 2025 to 04 SEP 2025



DEPARTURE ROUTE DESCRIPTION

TAKEOFF RUNWAYS 1L/R: Climb on heading 014° to 520, then right turn direct MDBAY, then on track 323° to HUSSH, then on track 324° to NIITE. Thence. . .
TAKEOFF RUNWAYS 28L/R: Climb on heading 284° to 520 and at or below 220K, then right turn direct GALOO, then on track 325° to NIITE. Thence. . .

. . . on (transition). Maintain FL190, expect filed altitude 10 minutes after departure.

DEDHD TRANSITION (NIITE4.DEDHD)

GOBBS TRANSITION (NIITE4.GOBBS)

GRTFL TRANSITION (NIITE4.GRTFL)

MOGEE TRANSITION (NIITE4.MOGEE)

ORRCA TRANSITION (NIITE4.ORRCA)

SYRAH TRANSITION (NIITE4.SYRAH)

TIPRE TRANSITION (NIITE4.TIPRE)

NOTE: Chart not to scale.

NIITE FOUR DEPARTURE (RNAV)

(NIITE4.NIITE) 11JUL24

SAN FRANCISCO, CALIFORNIA
SAN FRANCISCO INTL (SFO)

SW-2, 07 AUG 2025 to 04 SEP 2025