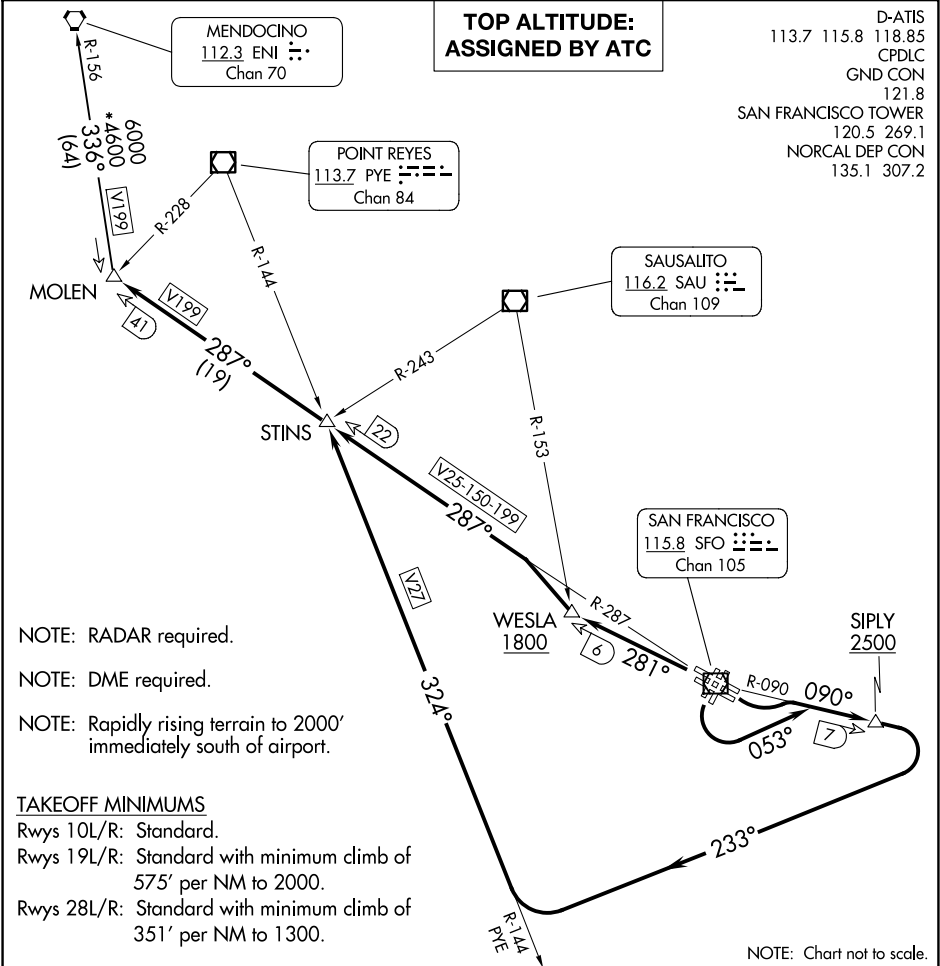


(MOLEN9.MOLEN) 23334  
MOLEN NINE DEPARTURE

AL-375 (FAA)

SAN FRANCISCO INTL (SFO)  
SAN FRANCISCO, CALIFORNIA



**DEPARTURE ROUTE DESCRIPTION**

**TAKEOFF RUNWAYS 10L/R:** Climbing left turn to intercept SFO R-090 to cross SIPLY 7 DME FIX at or above 2500, then climbing right turn heading 233° to intercept and proceed on PYE R-144 to STINS INT/SFO 22 DME, then on SFO VOR/DME R-287 to MOLEN INT/SFO 41 DME. Thence . . . .

**TAKEOFF RUNWAYS 19L/R:** Climbing left turn to heading 053° to intercept SFO R-090 to cross SIPLY 7 DME FIX at or above 2500, then climbing right turn heading 233° to intercept and proceed on PYE R-144 to STINS INT/SFO VOR/DME 22 DME, then on SFO VOR/DME R-287 to MOLEN INT/SFO 41 DME. Thence . . . .

**TAKEOFF RUNWAYS 28 L/R:** Climb on SFO VOR/DME R-281 to cross WESLA INT/SFO VOR/DME 6 DME at or above 1800 then climbing right turn to intercept SFO R-287 to MOLEN INT/SFO 41 DME. Thence . . . .

. . . . (transition). Expect clearance to filed altitude 10 minutes after departure.

**MENDOCINO TRANSITION (MOLEN9.ENI):** From over MOLEN INT on ENI R-156 to ENI VORTAC.

MOLEN NINE DEPARTURE  
(MOLEN9.MOLEN) 27JAN22

SAN FRANCISCO, CALIFORNIA  
SAN FRANCISCO INTL (SFO)

SW-2, 07 AUG 2025 to 04 SEP 2025

SW-2, 07 AUG 2025 to 04 SEP 2025