

LOC/DME I-GWQ	APP CRS	Rwy Ldg	28R	28L
111.7	284°	TDZE	11236	10275
Chan 54		Apt Elev	13	13

ILS or LOC RWY 28R

SAN FRANCISCO INTL (SFO)

RNAV 1-GPS or RADAR required for procedure entry.

▼

▲

Circling NA to Rwy's 10L, 10R, 19L, and 19R. Circling Rwy 1L, 1R NA at night. LOC procedure NA during simultaneous operations. For inop ALS increase S-LOC 28R\* Cat C/D visibility to 1 1/2 SM. Simultaneous approach authorized. Simultaneous operations require use of vertical guidance; maintain last assigned altitude until established on glideslope.

ALSF-2

Rwy 28R

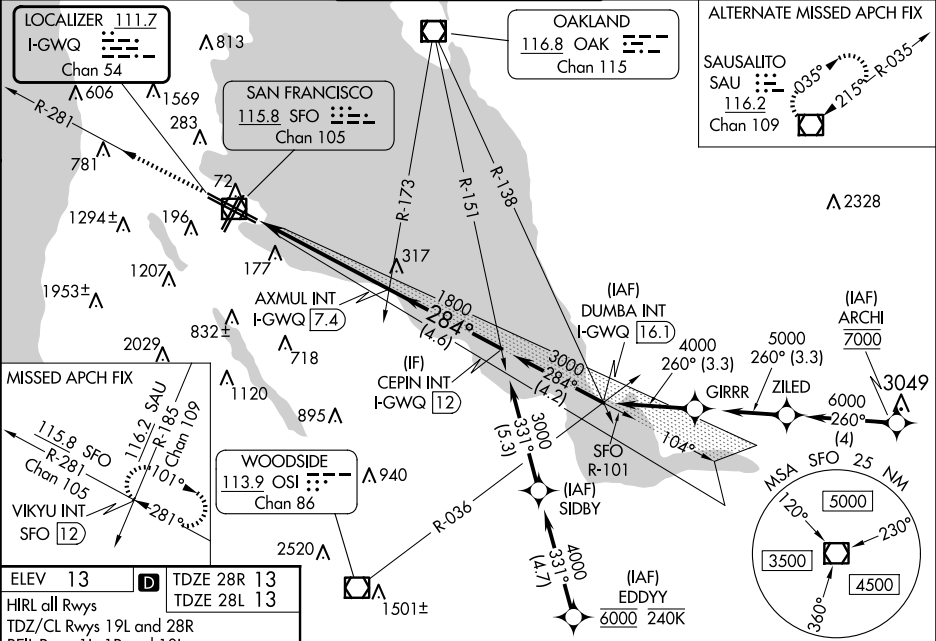
MALSR

Rwy 28L

MISSED APPROACH: Climb to 3000 on SFO VOR/DME R-281 to VIKYU INT/SFO 12 DME and hold.

\*Missed approach requires minimum climb of 350 feet per NM to 1900; if unable to meet climb gradient, see ILS or LOC RWY 28L.

D-ATIS	NORCAL APP CON	SAN FRANCISCO TOWER	GND CON	CLNC DEL	CPDLC
113.7 115.8 118.85	134.5 338.2	120.5 269.1	121.8	118.2	



ELEV 13

TDZE 28R 13

TDZE 28L 13

HIRL all Rwy's

TDZ/CL Rwy's 19L and 28R

REIL Rwy's 1L, 1R and 10L

FAF to MAP 5.4 NM

Knots 60 90 120 150 180

Min:Sec 5:24 3:36 2:42 2:10 1:48

CATEGORY			
S-ILS 28R*			
S-LOC 28R*			
SIDESTEP* 28L			
CIRCLING			