

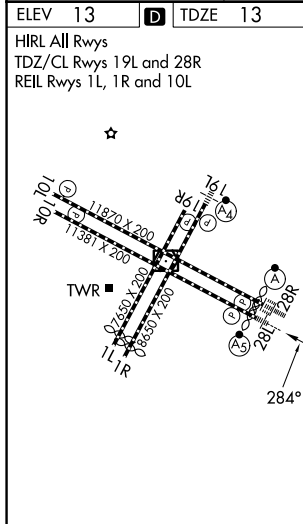
ILS or LOC RWY 28L
SAN FRANCISCO INTL (SFO)

MALSR

MISSED APPROACH: Climb to 4000 on SFO VOR/DME R-275 to OLYMM INT/SFO 15.4 DME and hold, continue climb-in-hold to 4000. #Missed approach requires minimum climb of 330 feet per NM to 1600.

****For inop ALS increase S-LOC 28L Cat C/D visibility to 2½ SM.**

ALTERNATE MISSED APCH FIX



VGS and ILS glidepath not coincident (VGS Angle 2.85/TCH 67).
Use I-SFO DME when on the localizer course.

CATEGORY	A	B	C	D
S-ILS 28L*#	213/24	200 (200-½)		
S-ILS 28L †	789-1¾	776 (800-1¾)		
S-LOC 28L#	460/24	447 (500-½)	460/45	447 (500-¾)
S-LOC 28L**	860/24 847 (900-½)	860/40 847 (900-¾)	860-1⅞	847 (900-1⅞)
CIRCLING	860-1¼ 847 (900-1¼)	960-1¼ 947 (1000-1¼)	1560-3 1547 (1600-3)	NA

SW-2, 07 AUG 2025 to 04 SEP 2025