

LOC/DME I-GWQ <u>111.7</u> Chan 54	APP CRS 284°	Rwy Ldg 11236 TDZE 13 Apt Elev 13
--	------------------------	--

ILS RWY 28R (SA CAT I)
SAN FRANCISCO INTL (SFO)

RNAV 1-GPS or RADAR required for procedure entry.

Requires specific OPSPEC, MSPEC, or LOA approval and use of HUD to DH.

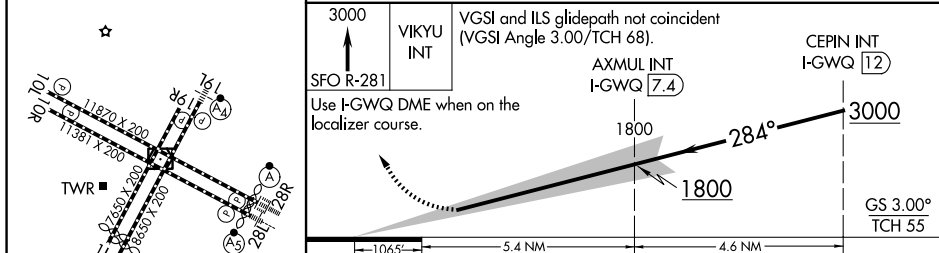
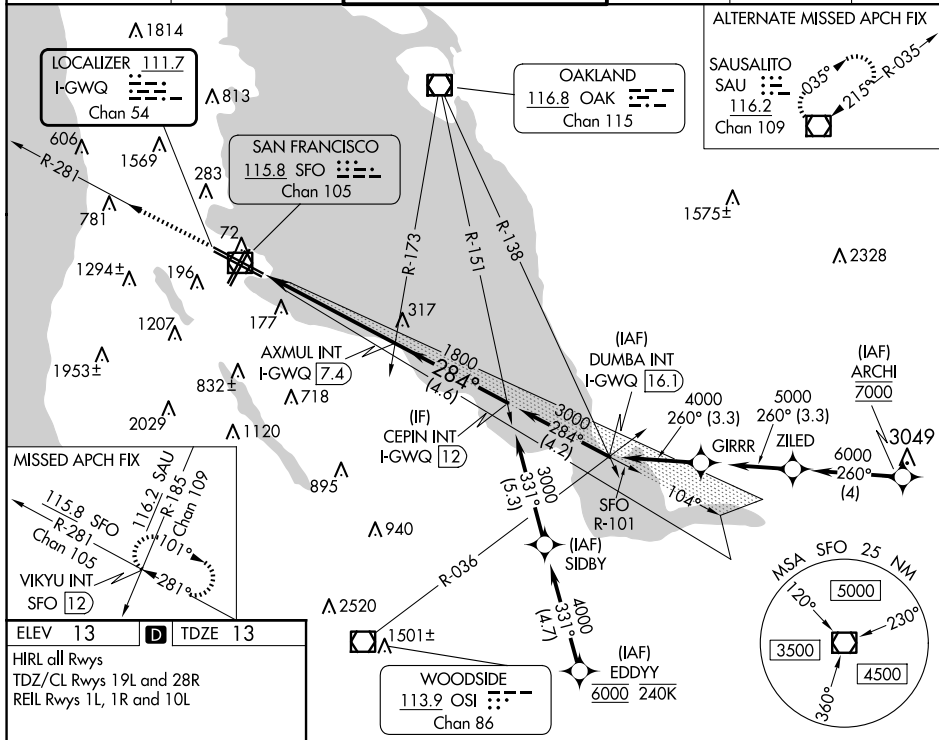
ALSF-2



MISSED APPROACH: Climb to 3000 on SFO VOR/DME R-281 to VIKYU INT/SFO 12 DME and hold.

*Missed approach requires minimum climb of 350 feet per NM to 1900; if unable to meet climb gradient, see ILS or LOC RWY 28L.

D-ATIS 113.7 115.8 118.85	NORCAL APP CON 134.5 338.2	SAN FRANCISCO TOWER 120.5 269.1	GND CON 121.8	CLNC DEL 118.2	CPDLC
---------------------------------	-------------------------------	------------------------------------	------------------	-------------------	-------



CATEGORY	A	B	C	D
S-ILS 28R*	RA 163/14 150 DA 163			

SA CATEGORY I ILS - SPECIAL AIRCREW
& AIRCRAFT CERTIFICATION REQUIRED