

LOC/DME I-SFO	APP CRS	Rwy Ldg	10275
109.55	284°	TDZE	13
Chan 32(Y)		Apt Elev	13

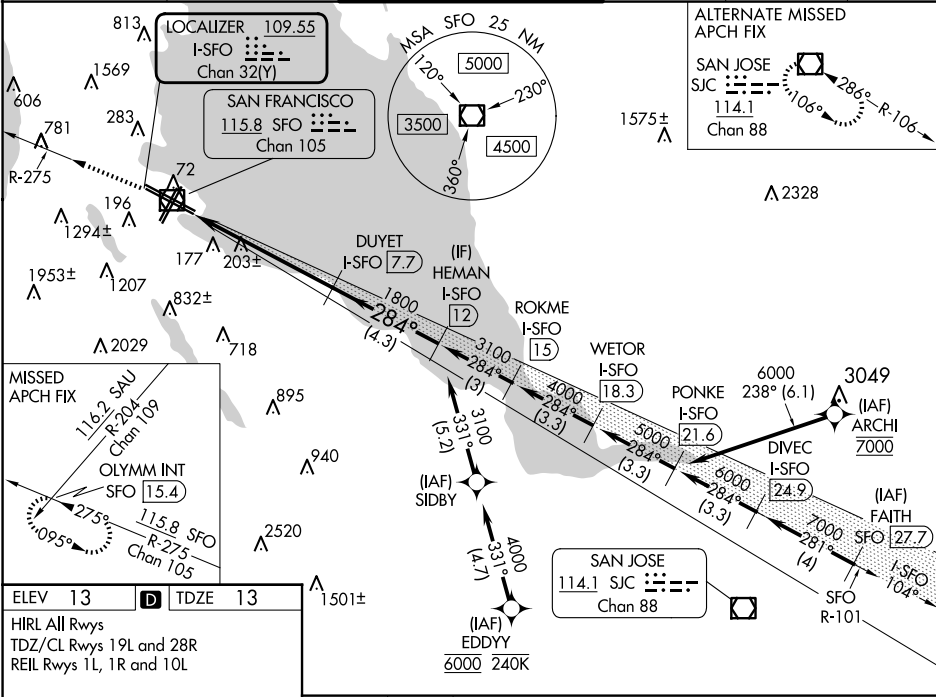
ILS RWY 28L (SA CAT II)
SAN FRANCISCO INTL (SFO)

DME required. RNP APCH-GPS or RADAR required for procedure entry.

MALSR

MISSED APPROACH: Climb to 4000 on SFO VOR/DME R-275 to OLYMM INT/SFO 15.4 DME and hold, continue climb-in-hold to 4000.
*Misted approach requires minimum climb of 330 feet per NM to 1600.

D-ATIS 113.7 115.8 118.85	NORCAL APP CON 134.5 338.2	SAN FRANCISCO TOWER 120.5 269.1	GND CON 121.8	CLNC DEL 118.2	CPDLC
---	--------------------------------------	---	-------------------------	--------------------------	-------



ELEV 13 D TDZE 13

HIRL All Rwys
TDZ/CL Rwys 19L and 28R
REIL Rwys 1L, 1R and 10L

4000

OLYMM INT

VGSI and ILS glidepath not coincident (VGSI Angle 2.85/TCH 67).

Use I-SFO DME when on the localizer course.

HEMAN I-SFO 12

DUYET I-SFO 7.7

SFO R-275

3100

1800

284°

GS 2.85° TCH 53

CATEGORY	A	B	C	D
S-ILS 28L*	RA 113/12 100 DA 113			

SA CAT II ILS - SPECIAL AIRCREW & AIRCRAFT CERTIFICATION REQUIRED

SW-2, 07 AUG 2025 to 04 SEP 2025

SW-2, 07 AUG 2025 to 04 SEP 2025