

SAN FRANCISCO, CALIFORNIA

AL-375 (FAA)

25163

GBAS CH <b>21859</b> <b>G19B</b>	APP CRS <b>194°</b>	Rwy Ldg <b>7650</b> TDZE <b>11</b> Apt Elev <b>13</b>
--	------------------------	---

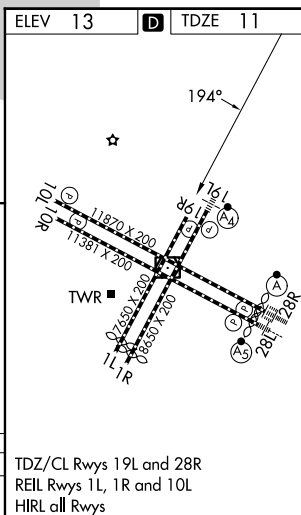
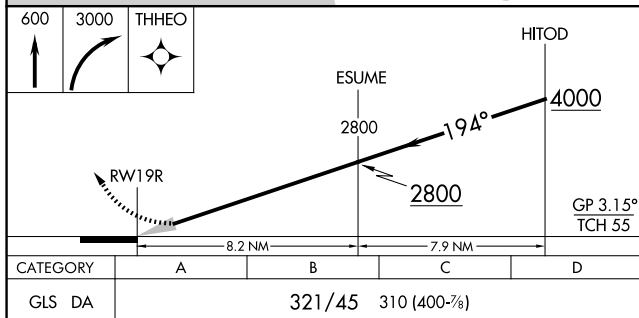
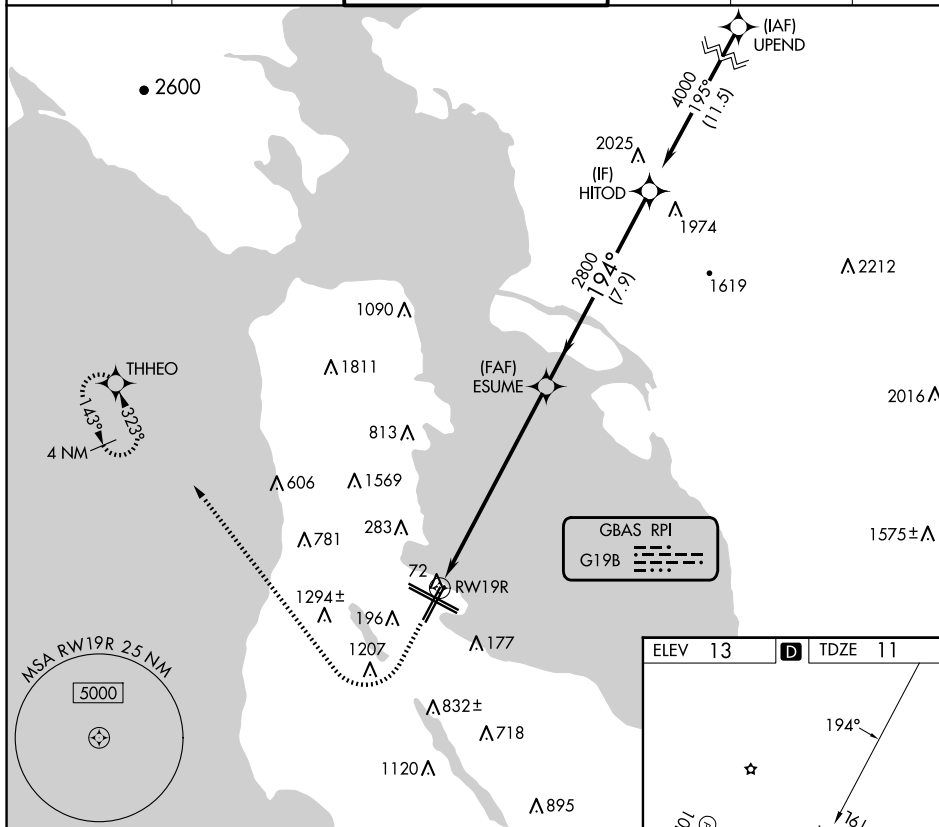
GLS RWY 19R  
SAN FRANCISCO INTL (SFO)

RNP APCH-GPS.

**T**  
**A** NA Autopilot coupled approach NA below 321 feet.

**MISSED APPROACH:** Climb to 600 then climbing right turn to 3000 direct THHEO and hold. Missed approach requires minimum climb of 395 feet per NM to 2100.

D-ATIS 113.7 115.8 118.85	NORCAL APP CON 134.5 338.2	SAN FRANCISCO TOWER 120.5 269.1	GND CON 121.8	CLNC DEL 118.2	CPDLC
---------------------------------	-------------------------------	------------------------------------	------------------	-------------------	-------



SAN FRANCISCO, CALIFORNIA

Amdt 1 30NOV23

37°37'N-122°23'W

SAN FRANCISCO INTL (SFO)

GLS RWY 19R

SW-2, 07 AUG 2025 to 04 SEP 2025

SW-2, 07 AUG 2025 to 04 SEP 2025