

GBAS

CH **21448**

G19A

APP CRS

194°

Rwy Ldg

8650

TDZE

11

Apt Elev

13

GLS RWY 19L

SAN FRANCISCO INTL (SFO)

RNP APCH-GPS.

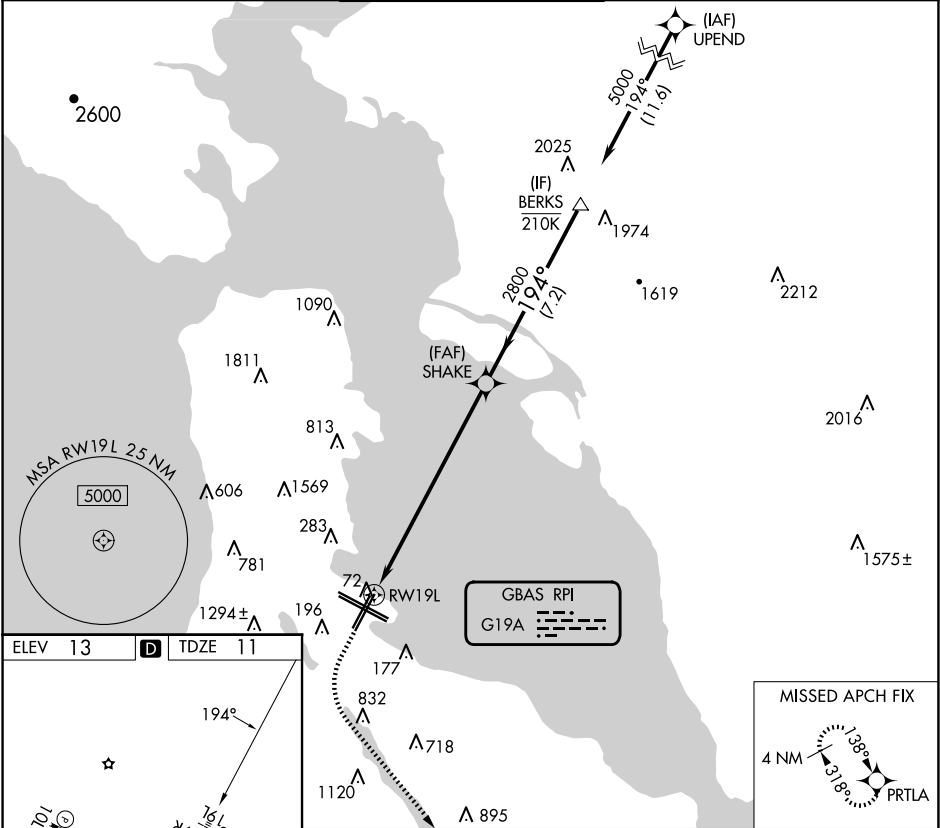
MALSF

MISSED APPROACH: Climb to 920 then climbing left turn to 4000 direct PRTLA and hold. Missed approach requires minimum climb of 357 feet per NM to 2000.

Autopilot coupled approach NA below 293 feet.

For inop ALS, increase GLS visibility to RVR 4500.

D-ATIS 113.7 115.8 118.85	NORCAL APP CON 134.5 338.2	SAN FRANCISCO TOWER 120.5 269.1	GND CON 121.8	CLNC DEL 118.2	CPDLC
-------------------------------------	--------------------------------------	---	-------------------------	--------------------------	-------



ELEV 13 TDZE 11

194°

10L 10R 28L 28R 1L 1R

TWR

11370 X 200 11361 X 200 07450 X 200 08650 X 200

10L 10R 28L 28R 1L 1R

MISSED APCH FIX

4 NM

138° 1318°

PRTLA

920 4000 PRTLA

VGSI and GLS glidepath not coincident (VGSI Angle 3.00°/TCH 71).

SHAKE 2800 194° 5000

BKRS

GP 3.00° TCH 55

8.6 NM 7.2 NM

CATEGORY	A	B	C	D
GLS DA	293/40 282 (300-¾)			