

VOR/DME RWY 29

VORTAC PGY <b>116.45</b> Chan <b>111(Y)</b>	APCH CRS <b>279°</b>	Rwy Idg TDZE Arpt Elev <b>7501</b> <b>26</b> <b>26</b>
---	-------------------------	---

[USN]

NORTH ISLAND NAS (HALSEY FIELD) (KNZY)

**⚠** \* When ALS inop, increase CAT AB vis to 1 mile, CAT CD vis to 1¾ miles.  
\*\* Circling not authorized W of Rwy 18-36.  
Circling authorized to Rwy 18 only.

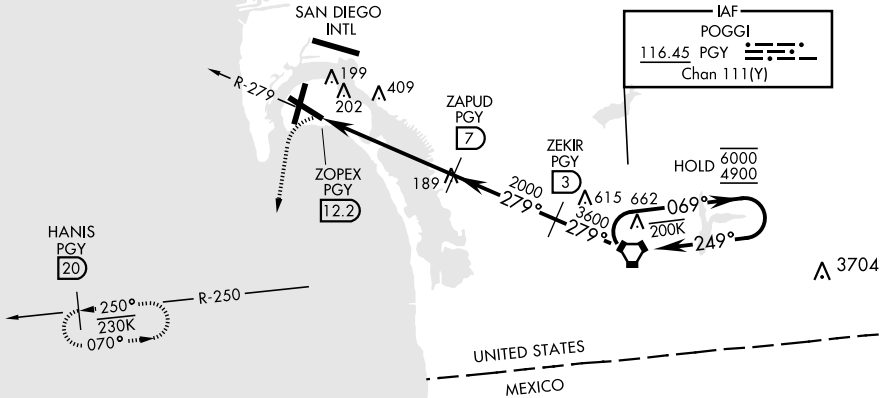
ALS-F-1  
**(A1)**

MISSED APPROACH: Climbing left turn to 2000 via hdg 177° intercept PGY VORTAC R-250 to HANIS and hold.

ATIS★ <b>317.8</b>	SOCAL APP CON <b>125.15 317.55</b>	TOWER★ <b>135.1 336.4</b>	GND CON <b>118.0 360.675</b>	CLNC DEL <b>128.4 288.25</b>	PAR/ASR
-----------------------	---------------------------------------	------------------------------	---------------------------------	---------------------------------	---------

Visibility reduction by helicopters not authorized.

CAUTION:  
Final apch length 12.2 NM.  
Final apch intersects RCL at 3733'.



RADAR required for westbound V317 arrivals at PGY VORTAC.

EMERG SAFE ALT 100 NM 13,700

hdg 177°

PGY R-250

HANIS PGY 20

VGSI and descent angles not coincident (VGSI Angle 3.00/TCH 46).

ZAPUD PGY 7

PGY VORTAC

One Minute Holding Pattern

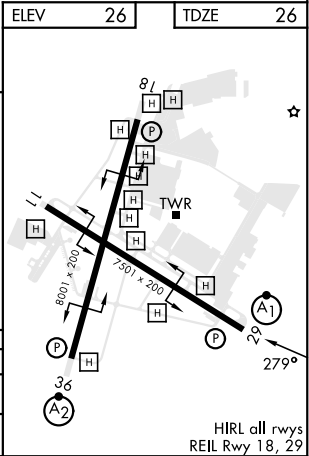
279° 069° 249°

2000 3600 6000 4900

3.72° TCH 46

0.1 5.2 NM 4 NM 3 NM

CATEGORY	A	B	C	D
S-29 *	660-¾ 634 (700-¾)		660-1¾ 634 (700-1¾)	
CIRCLING **	660-1 634 (700-1)		NOT AUTHORIZED	



VOR/DME RWY 29

SW-3, 07 AUG 2025 to 04 SEP 2025

SW-3, 07 AUG 2025 to 04 SEP 2025