

SAN DIEGO, CALIFORNIA

RNAV (RNP) Z RWY 36

APCH CRS	Rwy Idg	8001
004°	TDZE	19
	Arpt Elev	26

(USN)

NORTH ISLAND NAS (HALSEY FLD) (KNZY)

RNP AR APCH-GPS, RF.

▼ * When ALS inop, increase vis to 7/8 mile.

A2

MISSED APPROACH: Climb to 700, then climbing right turn to 2000 direct SKATE and hold.

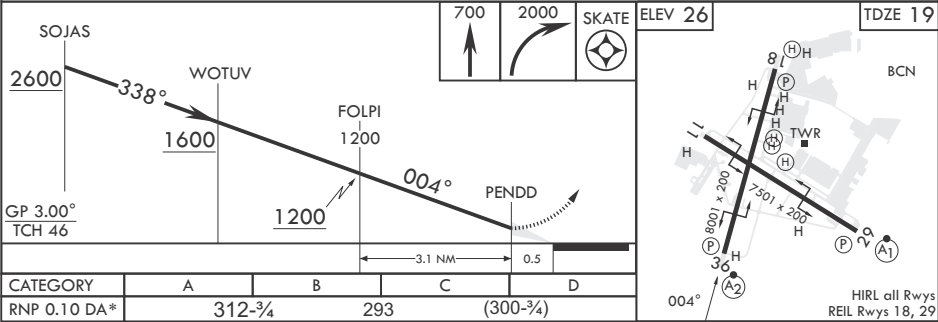
ATIS★ 317.8	SOCAL APP CON/DEP CON 125.15 317.55	TOWER★ 135.1 336.4	GND CON 118.0 360.675	CLNC DEL 128.4 288.25	ASR/PAR
----------------	--	-----------------------	--------------------------	--------------------------	---------

When local altimeter setting not received, use San Diego (SAN) Intl. altimeter setting.

For uncompensated Baro-VNAV systems, procedure not authorized below -15°C (5°F) or above 54°C (129°F).



AUTHORIZATION REQUIRED
EMERG SAFE ALT 100 NM 13,700



SW-3, 07 AUG 2025 to 04 SEP 2025

SW-3, 07 AUG 2025 to 04 SEP 2025