

LOC/DME I-SAN 111.55 Chan 52(Y)	APCH CRS 095°	Rwy Idg N/A THRE N/A Arpt Elev 26
---	-------------------------	--

[USN]

NORTH ISLAND NAS (HALSEY FIELD) (KNZY)

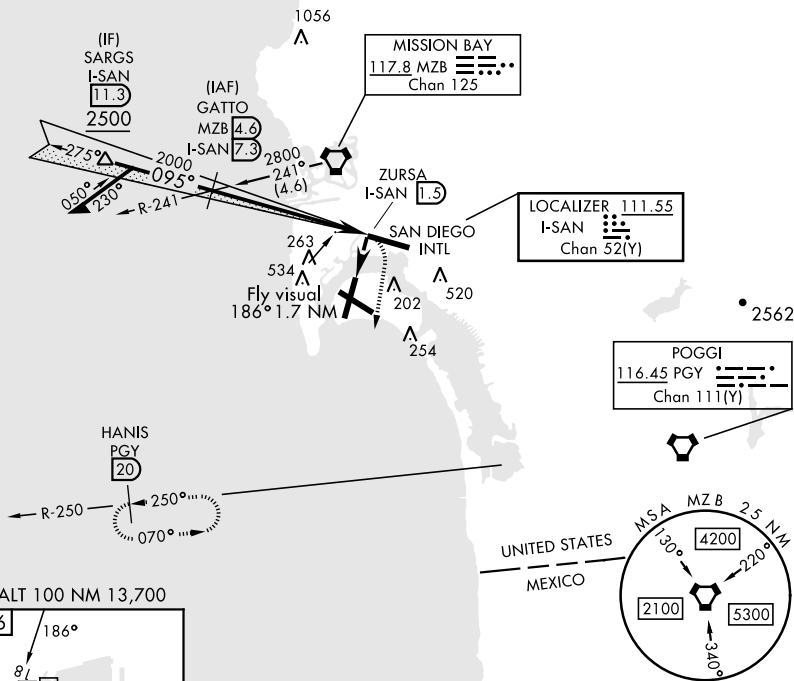
RADAR required at SARGs.

T * CAUTION: Maneuvering for circling approach not authorized W of Rwy18-36 centerline. Approach authorized for Rwy 18 or left downwind approach to Rwy 29 after flying down Rwy 18.

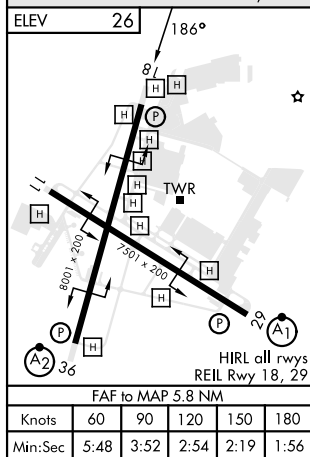
MISSED APPROACH: Climb and maintain 2000 via hdg 177°, intercept PGY VORTAC R-250 to HANIS and hold.

ATIS ★ 317.8	SOCAL APP CON 125.15 317.55	NORTH ISLAND TOWER ★ 135.1 336.4	LINDBERGH TOWER 118.3 338.225	GND CON 118.0 360.675	CLNC DEL 128.4 288.25	PAR/ASR
-----------------	--------------------------------	-------------------------------------	----------------------------------	--------------------------	--------------------------	---------

CAUTION: Aircraft executing missed approach after beginning circling maneuver do not return to missed approach point.



EMERG SAFE ALT 100 NM 13,700

[illegible]

SAN DIEGO, CALIFORNIA

32°42'N-117°13'W NORTH ISLAND NAS (HALSEY FIELD) (KNZY)

Amdt 8 26DEC24

LOC/DME-B

SW-3, 07 AUG 2025 to 04 SEP 2025

SW-3, 07 AUG 2025 to 04 SEP 2025