

HI-TACAN Z RWY 36

* When ALS inop, increase vis to 2 miles.

SALSF

MISSED APPROACH: Climbing right turn to 2000 intercept the NZY TACAN R-208 to SKATE and hold.

ATIS ★
317.8

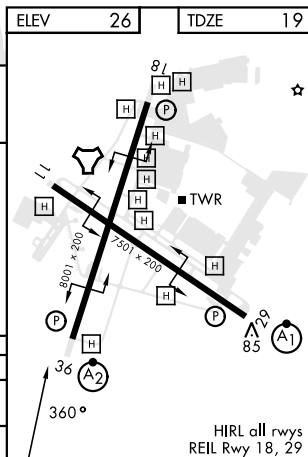
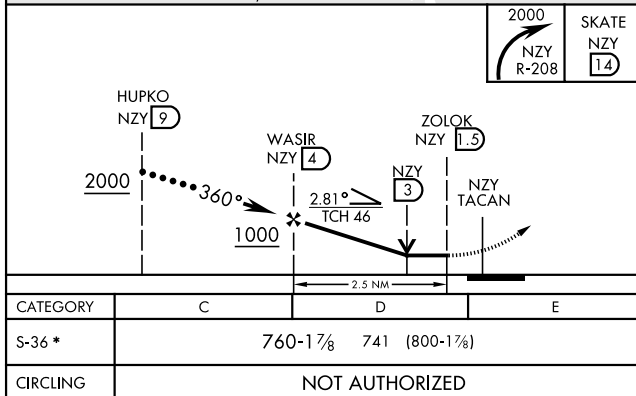
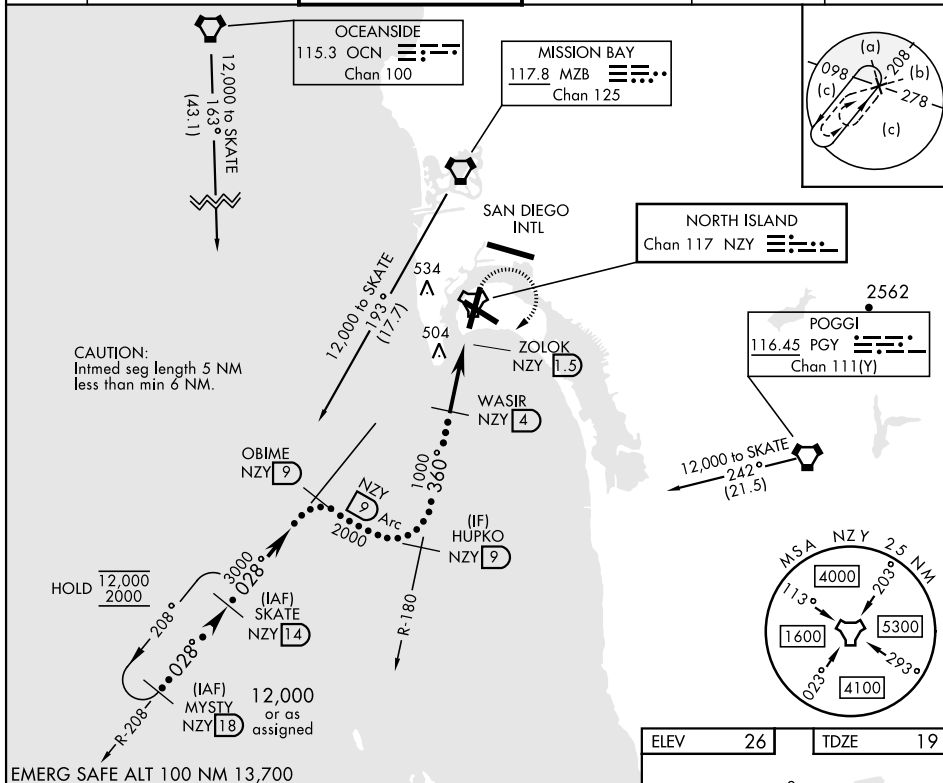
SOCAL APP CON
125.15 317.55

TOWER★
135.1 336.4

GND CON
118.0 360.67

CLNC DEL
128,4 288,25

PAR/ASR



SAN DIEGO, CALIFORNIA

32°42'N-117°13'W

NORTH ISLAND NAS (HALSEY FIELD) (KNZY)

Amdt 5 26DEC24

HI-TACAN Z RWY 36

SW-3, 07 AUG 2025 to 04 SEP 2025