

HI-TACAN Z RWY 29

T * When ALS inop, increase vis to 1 $\frac{3}{8}$ miles.

ALSF-1

MISSED APPROACH: Climbing left turn to 2000 via NZY TACAN R-178 to OCAB. Arc S on the NZY 9 DME arc to OBIME, then via NZY R-208 to SKATE and hold.

ATIS ★
317.8

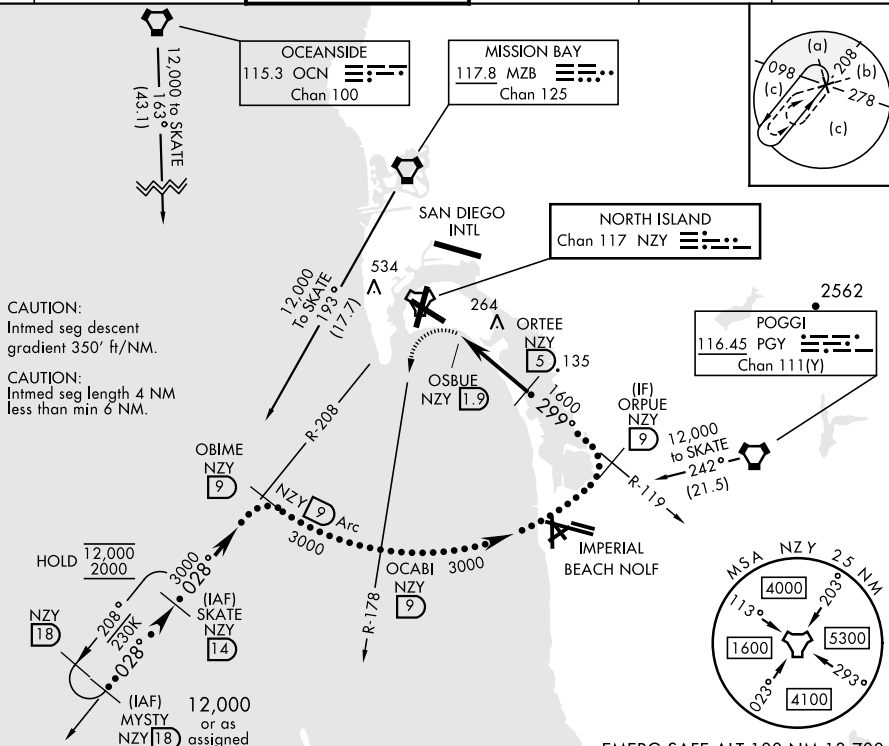
SOCAL APP CON
125.15 317.55

TOWER★
135.1 336.4

GND CON
118.0 360.6

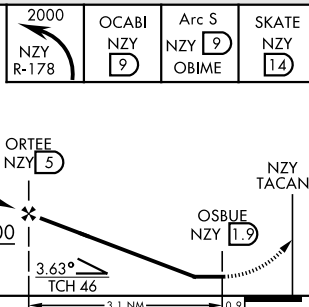
CLNC DEL
128.4 288.25

PAR/ASR



EMERG SAFE ALT 100 NM 13,700

VGSI and descent angles
not coincident
(VGSI Angle 3.00/TCH 46).



CATEGORY	C	D	E
S-29 *	520-1 494 (500-1)		
CIRCLING	NOT AUTHORIZED		

