

SW-3, 07 AUG 2025 to 04 SEP 2025

ARRIVAL ROUTE DESCRIPTION

IMPERIAL TRANSITION (IPL.TOPGN2)

MOMAR TRANSITION (MOMAR.TOPGN2)

PARKER TRANSITION (PKE.TOPGN2)

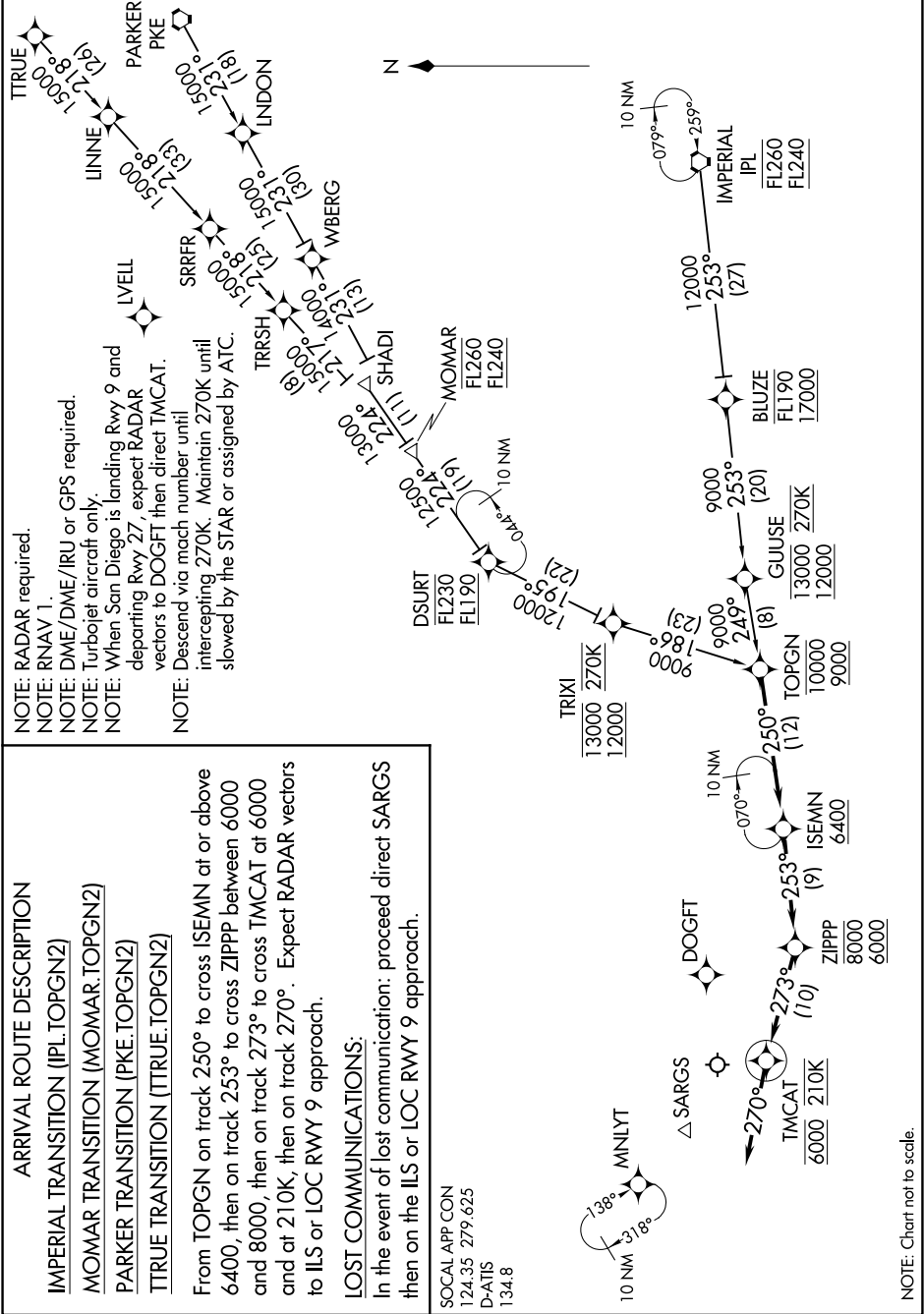
TRUE TRANSITION (TRUE.TOPGN2)

From TOPGN on track 250° to cross ISEMN at or above 6400, then on track 253° to cross ZIPPP between 6000 and 8000, then on track 273° to cross TMCAT at 6000 and at 210K, then on track 270°. Expect RADAR vectors to ILS or LOC RWY 9 approach.

LOST COMMUNICATIONS:

In the event of lost communication: proceed direct SARGS then on the ILS or LOC RWY 9 approach.

SOCAL APP CON  
124.35 279.625  
D-ATIS  
134.8



SW-3, 07 AUG 2025 to 04 SEP 2025