

SAN DIEGO, CALIFORNIA

AL-373 (FAA)

25163

WAAS CH 82527 W27A	APP CRS 275°	Rwy Ldg 7591 TDZE 17 Apt Elev 17
--	------------------------	---

RNAV (GPS) Y RWY 27
SAN DIEGO INTL (SAN)

RNP APCH.

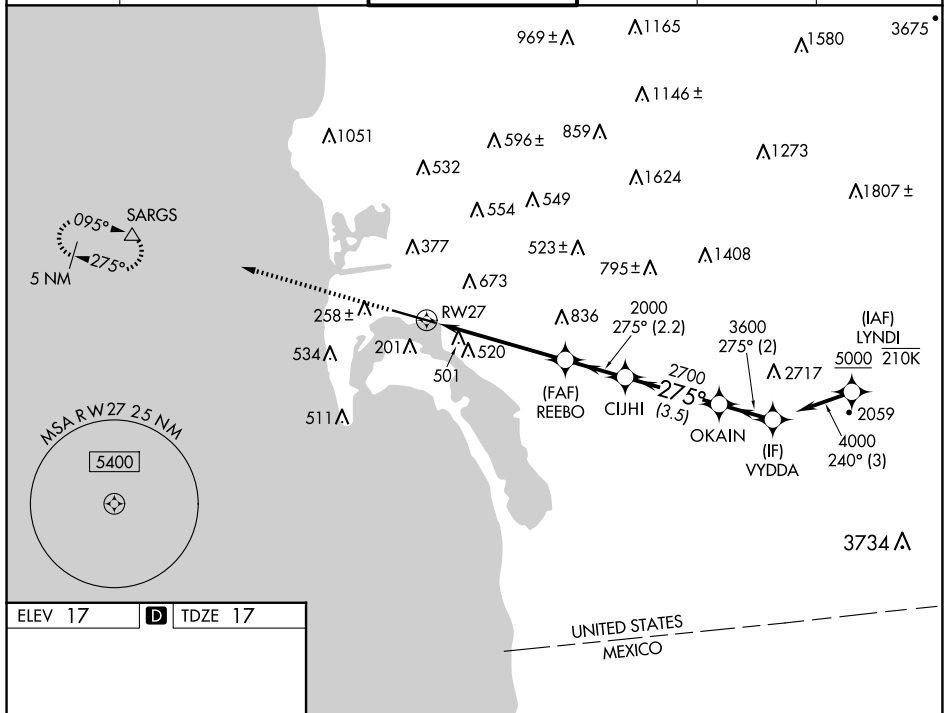
T Rwy 27 helicopter visibility reduction below RVR 5000 NA. Straight-in Rwy 27
A at night, operational VGSJ required, remain on or above VGSJ glidepath until
threshold. Circling NA north of Rwy 9-27. For inop ALS, increase LNAV Cats C/D
visibility to 2 SM. Inop table does not apply to LP Cats A/B and LNAV Cat A.

MALS



MISSED APPROACH: Climb to 2500 direct SARGS and hold.

D-ATIS 134.8	SOCAL APP CON 119.6 363.1 (WEST) 124.35 279.625 (EAST)	LJNDBERGH TOWER 118.3 338.225	GND CON 123.9	CLNC DEL 125.9	CPDLC
------------------------	--	---	-------------------------	--------------------------	-------



CATEGORY	A	B	C	D
LP MDA	680/50	663 (700-1)	680-1 $\frac{3}{4}$	663 (700-1 $\frac{3}{4}$)
LNAV MDA	760/50 743 (800-1)	760/55 743 (800-1)	760-1 $\frac{7}{8}$	743 (800-1 $\frac{7}{8}$)
C CIRCLING	820-1 803 (900-1)	820-1 $\frac{1}{4}$ 803 (900-1 $\frac{1}{4}$)	820-2 $\frac{1}{2}$ 803 (900-2 $\frac{1}{2}$)	940-3 923 (1000-3)

SAN DIEGO, CALIFORNIA

Amdt 4A 15AUG19

SAN DIEGO INTL (SAN)

32°44'N-117°11'W

RNAV (GPS) Y RWY 27

SW-3, 07 AUG 2025 to 04 SEP 2025