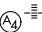
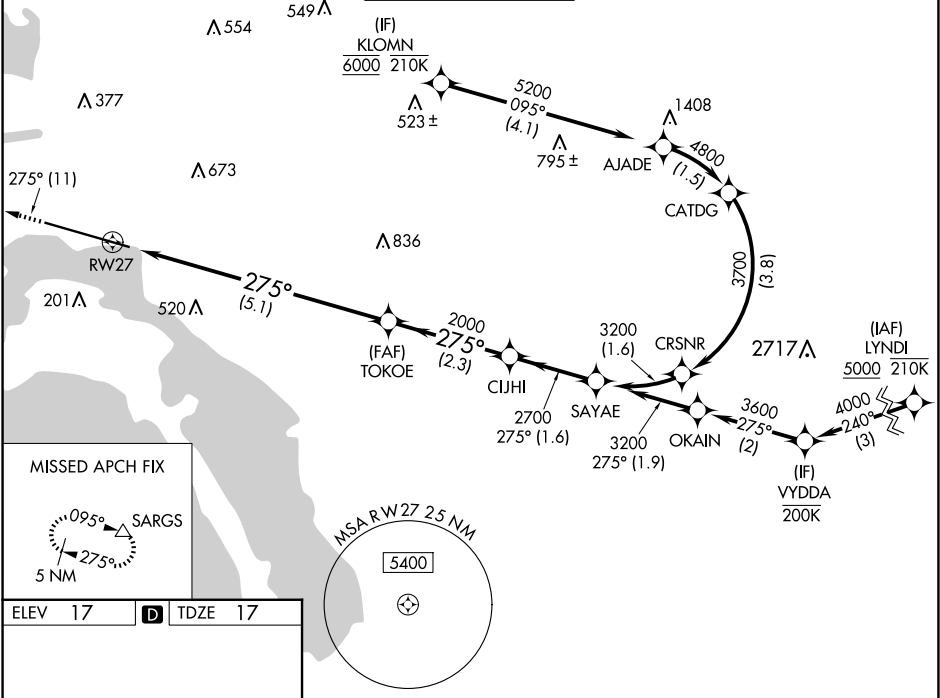


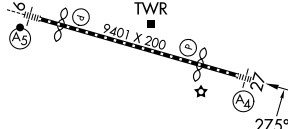
APP CRS	Rwy Ldg	7591
275°	TDZE	17
	Apt Elev	17

RNAV (RNP) Z RWY 27  
SAN DIEGO INTL (SAN)

RNP AR APCH - GPS. Authorization required. From KLOMN: RF.	MALS 	MISSED APPROACH: Climb to 2500 on track 275° to SARGs and hold.
▼ For uncompensated Baro-VNAV systems, procedure NA below 5°C or above 44°C. For inop ALS, increase RNP 0.30 all Cats visibility to 2½ SM. Straight-in Rwy 27 at night, operational VGSI required, remain on or above VGSI glidepath until threshold.		

D-ATIS 134.8	SOCAL APP CON 119.6 363.1 (WEST) 124.35 279.625 (EAST)	LINDBERGH TOWER 118.3 338.225	GND CON 123.9	CLNC DEL 125.9	CPDLC
-----------------	--	----------------------------------	------------------	-------------------	-------



	<div><div>2500</div><div>↑</div><div>tr 275°</div></div> <div><div>SARGS</div><div>△</div></div> <div><div>VGSI and RNAV glidepath not coincident</div><div>(VGSI Angle 3.50/TCH 66).</div></div>															
	<div>See planview for multiple IF locations.</div> <div><div>TOKOE</div><div>2000</div></div> <div><div>CIJHI</div><div>2700</div></div> <div><div>SAYAE</div><div>3200</div></div> <div><div>GP 3.50°</div><div>TCH 75</div></div>															
	<div><div>RW27</div><div>275°</div></div> <div><div>5.1 NM</div><div>2.3 NM</div><div>1.6 NM</div></div>															
	<table><tr><td>CATEGORY</td><td>A</td><td>B</td><td>C</td><td>D</td></tr><tr><td>RNP 0.11 DA</td><td colspan="4">624-1½ 607 (700-1½)</td></tr><tr><td>RNP 0.30 DA</td><td colspan="4">789-2 772 (800-2)</td></tr></table>	CATEGORY	A	B	C	D	RNP 0.11 DA	624-1½ 607 (700-1½)				RNP 0.30 DA	789-2 772 (800-2)			
	CATEGORY	A	B	C	D											
RNP 0.11 DA	624-1½ 607 (700-1½)															
RNP 0.30 DA	789-2 772 (800-2)															
<div>TDZ/CL Rws 9 and 27</div> <div>HIRL Rwy 9-27</div>																
<div>AUTHORIZATION REQUIRED</div>																

SW-3, 07 AUG 2025 to 04 SEP 2025

SW-3, 07 AUG 2025 to 04 SEP 2025