


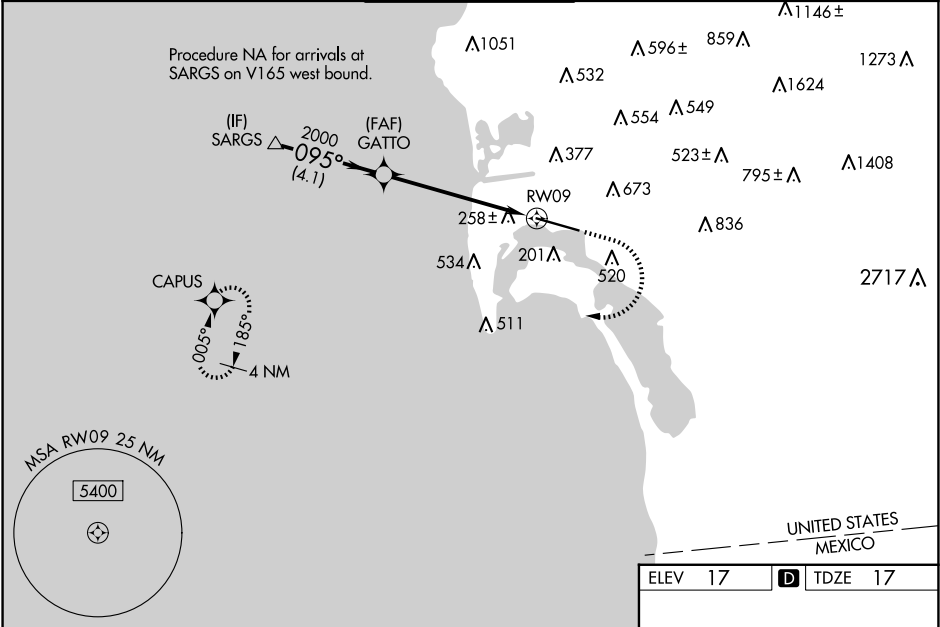
WAAS CH 49237 W09A	APP CRS 095°	Rwy Ldg 7280 TDZE 17 Apt Elev 17
--	------------------------	---

RNAV (GPS) RWY 9

SAN DIEGO INTL (SAN)

RNP APCH. <div><div>▼</div><div>▲</div></div> <div>Circling NA north of Rwy 9-27. For uncompensated Baro-VNAV systems, LNAV/VNAV NA below 6°C or above 47°C. When Circling to Rwy 27 at night, operational VGSI required, remain on or above VGSI glidepath until threshold. Rwy 9 helicopter visibility reduction below RVR 4000 NA. Inop table does not apply to LPV all Cats. For inop ALS, increase LNAV Cats A/B visibility to RVR 5500.</div>		MALSRL 	MISSED APPROACH: Climb to 2000 then climbing right turn to 3000 direct CAPUS and hold.
--	--	---	--

D-ATIS 134.8	SOCAL APP CON 119.6 363.1 (WEST) 124.35 279.625 (EAST)	LINDBERGH TOWER 118.3 338.225	GND CON 123.9	CLNC DEL 125.9	CPDLC
------------------------	--	---	-------------------------	--------------------------	-------



VGSI and RNAV glidepath not coincident (VGSI Angle 3.30/TCH 76).				<div>2000</div> <div>3000</div> <div>CAPUS</div>		
SARGs				*LNAV only.		
<div>GP 3.10° TCH 55</div> <div>2100</div> <div>095°</div> <div>2000</div> <div>GATTO</div> <div>2000</div> <div>*1.6 NM to RW09</div> <div>RW09</div> <div>4.1 NM</div> <div>4.3 NM</div> <div>1.6 NM</div>				<div>095°</div> <div>TWR</div> <div>9401 X 200</div> <div>A5</div> <div>A4</div>		
CATEGORY	A		B		C	D
LPV DA	262/40		245 (300-¾)			
LNAV/ VNAV DA	621-1½		604 (700-1½)			
LNAV MDA	600/40 583 (600-¾)		600-1¼ 583 (600-1¼)			
CIRCLING	800-1 783 (800-1)		820-1 803 (900-1)		820-2¼ 803 (900-2¼)	
					940-3 923 (1000-3)	
					TDZ/CL Rwy 9 and 27 HIRL Rwy 9-27	