

LUCKI ONE ARRIVAL (RNAV)

AL-373 (FAA)

SAN DIEGO INTL (SAN)
SAN DIEGO, CALIFORNIA

SW-3, 07 AUG 2025 to 04 SEP 2025

ARRIVAL ROUTE DESCRIPTION

HOGGZ TRANSITION (HOGGZ.LUCK11)

IMPERIAL TRANSITION (IPL.LUCK11)

LVELL TRANSITION (LVELL.LUCK11)

MOMAR TRANSITION (MOMAR.LUCK11)

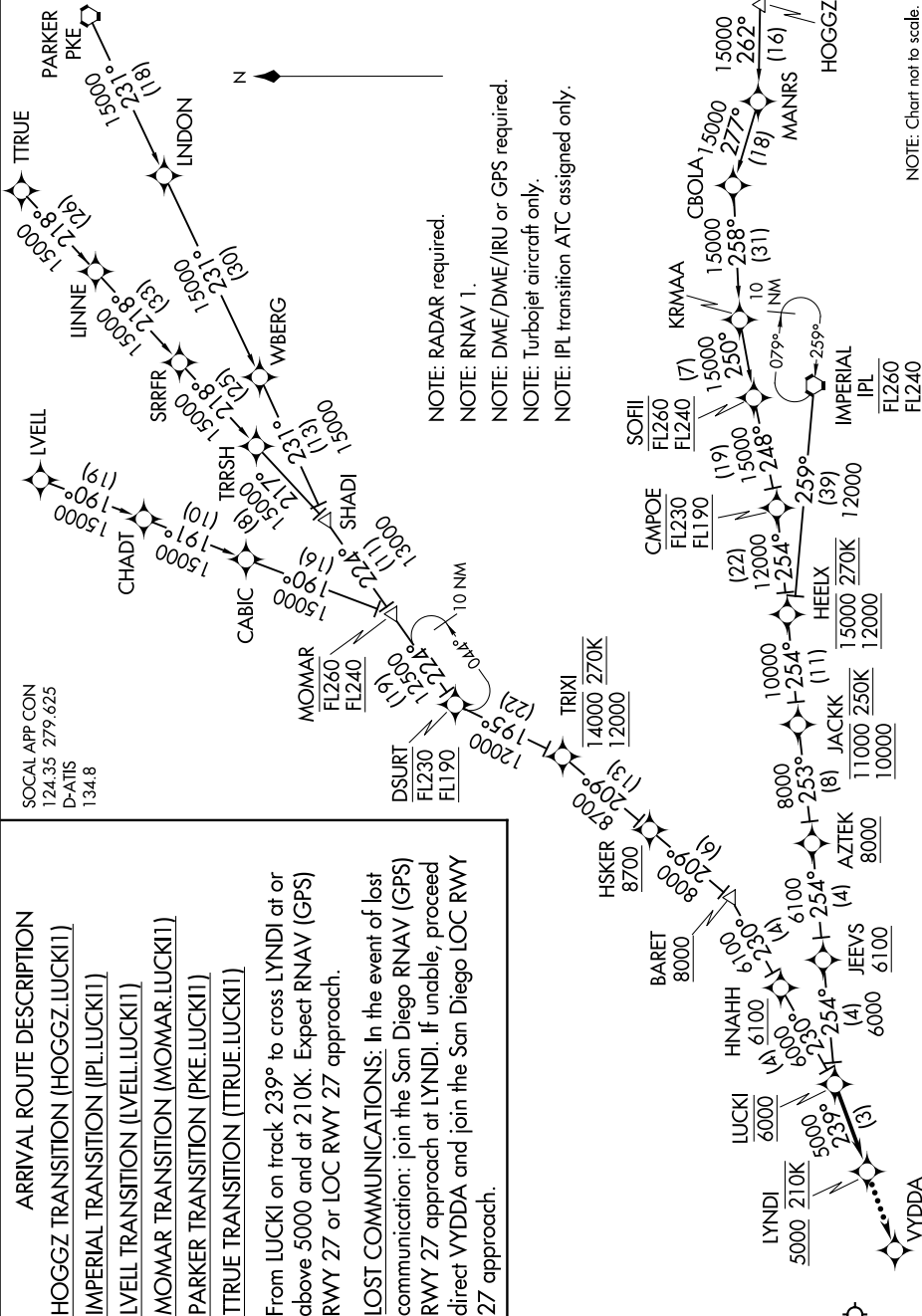
PARKER TRANSITION (PKE.LUCK11)

TRUE TRANSITION (TRUE.LUCK11)

From LUCKI on track 239° to cross LYNDI at or above 5000 and at 210K. Expect RNAV (GPS) RWY 27 or LOC RWY 27 approach.

LOST COMMUNICATIONS: In the event of lost communication: join the San Diego RNAV (GPS) RWY 27 approach at LYNDI. If unable, proceed direct VYDDA and join the San Diego LOC RWY 27 approach.

SOCAL APP CON
124.35 279.625
D-ATIS
134.8



NOTE: RADAR required.
NOTE: RNAV 1.
NOTE: DME/DME/RU or GPS required.
NOTE: Turbojet aircraft only.
NOTE: IPL transition ATC assigned only.

NOTE: Chart not to scale.

SW-3, 07 AUG 2025 to 04 SEP 2025

LUCKI ONE ARRIVAL (RNAV)