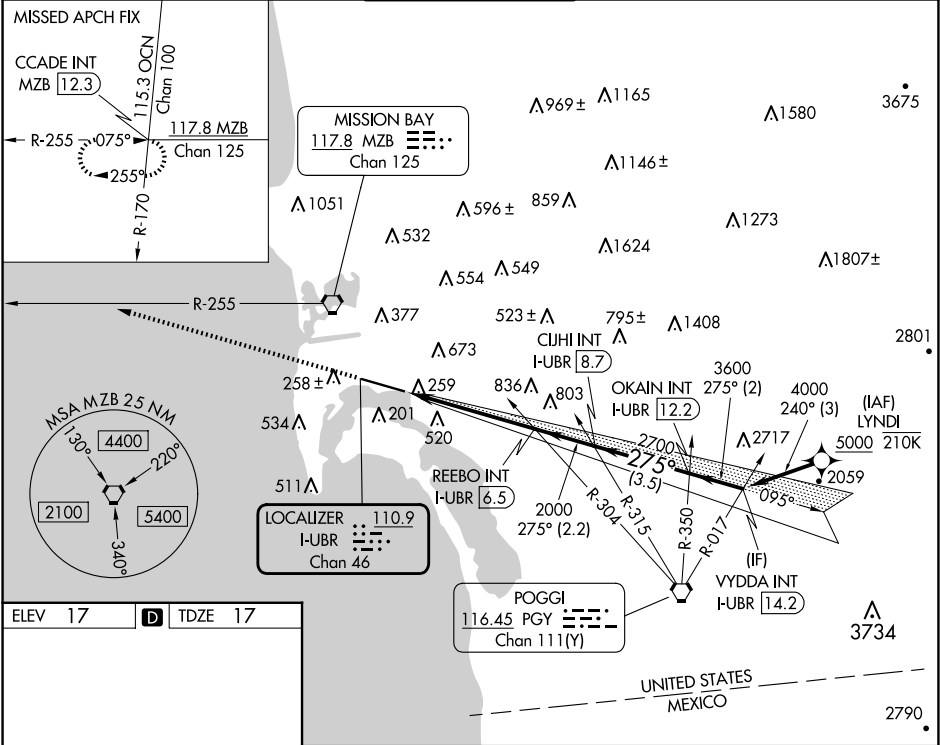


LOC/DME I-UBR 110.9 Chan 46	APP CRS 275°	Rwy Ldg TDZE 17 Apt Elev 17
---	------------------------	---

LOC RWY 27
SAN DIEGO INTL (SAN)

From LYNDI: RNAV 1-DME/DME/IRU or GPS required.		MAL5	MISSED APPROACH: Climb to 2500 on heading 275° and on MZB VORTAC R-255 to CCADE INT/MZB 12.3 DME and hold.
RNAV 1-DME/DME/IRU or GPS required for procedure entry.			
<div><div><div><div><div></div><div></div></div><div><div></div><div></div></div></div><div><div><div></div></div><div><div></div></div></div></div></div> <div>Rwy 27 helicopter visibility reduction below 1 SM NA. Circling NA north of Rwy 9-27. Inop table does not apply to Cats A and B. For inop ALS, increase S-27 Cats C and D visibility to 1 1/8 SM.</div>			

D-ATIS 134.8	SOCAL APP CON 119.6 363.1 (WEST) 124.35 279.625 (EAST)	LINDBERGH TOWER 118.3 338.225	GND CON 123.9	CLNC DEL 125.9	CPDLC
------------------------	--	---	-------------------------	--------------------------	-------



ELEV 17	D	TDZE 17
TDZ/CL Rwy 9 and 27 HIRL Rwy 9-27		
FAF to MAP 5.2 NM		
Knots	60	90 120 150 180
Min:Sec	5:12	3:28 2:36 2:05 1:44

2500 ↑ hdg 275°	MZB R-255	CCAIDE INT	VYDDA INT I-UBR 14.2		
I-UBR 1.3	REEBO INT I-UBR 6.5	CUJHI INT I-UBR 8.7	OKAIN INT I-UBR 12.2	4000	
<div>≤ 3.50° TCH 65</div> <div>275°</div> <div>2000 2700 3600</div>					
<div>5.2 NM 2.2 NM 3.5 NM 2 NM</div>					
CATEGORY	A		B	C	D
S-27	680-1 663 (700-1)		680-1¾ 663 (700-1¾)		
CIRCLING	820-1 803 (900-1)		840-2½ 823 (900-2½)		940-3 923 (1000-3)

SW-3, 07 AUG 2025 to 04 SEP 2025

SW-3, 07 AUG 2025 to 04 SEP 2025