


LOC/DME I-SAN	APP CRS	Rwy Ldg	7280
111.55	095°	TDZE	17
Chan 52(Y)		Apt Elev	17

ILS Y or LOC Y RWY 9

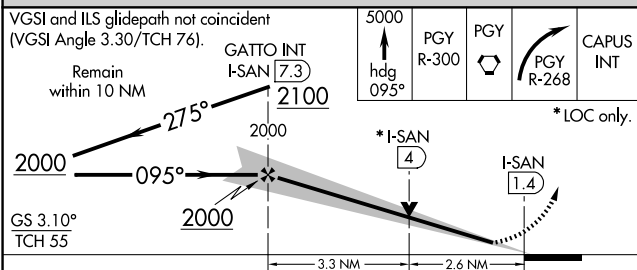
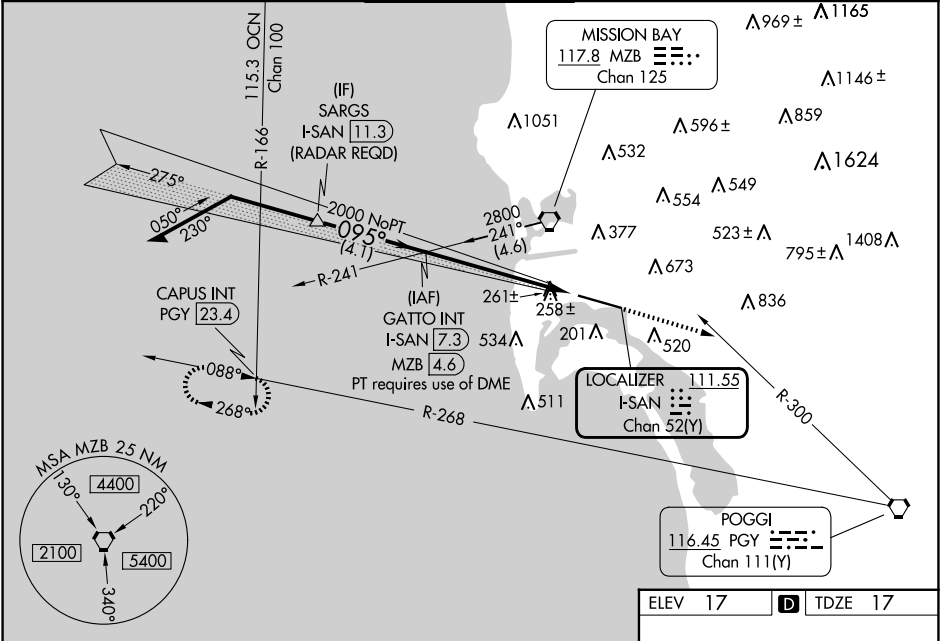
SAN DIEGO INTL (SAN)

⚠ Circling NA north of Rwy 9-27. Autopilot coupled approach NA below 530. When Circling to Rwy 27 at night, operational VGSI required, remain on or above VGSI glidepath until threshold. For inop ALS, increase S-ILS 9 all Cats visibility to 2½ SM. Rwy 9 helicopter visibility reduction below RVR 4000 NA. #Inop table does not apply to S-ILS 9.

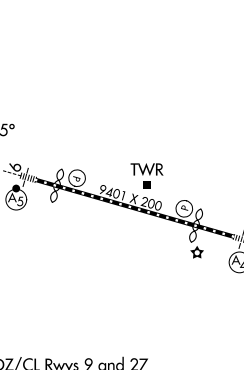
MALS


MISSED APPROACH: Climb to 5000 on heading 095° and on PGY VORTAC R-300 to PGY VORTAC, then right turn on PGY VORTAC R-268 to CAPUS INT/23.4 DME and hold.
#Missed approach requires minimum climb of 270 feet per NM to 4000.

D-ATIS	SOCAL APP CON	LINDBERGH TOWER	GND CON	CLNC DEL	CPDLC
134.8	119.6 363.1 (WEST) 124.35 279.625 (EAST)	118.3 338.225	123.9	125.9	



CATEGORY	A	B	C	D
S-ILS 9#		258/40	241 (300-¾)	
S-ILS 9		751-2	734 (800-2)	
S-LOC 9	960/40	943 (1000-¾)	960-2	943 (1000-2)
C CIRCLING	960-1¼	943 (1000-1¼)	960-2¾ 943 (1000-2¾)	960-3 943 (1000-3)

ELEV 17	D	TDZE 17			
					
TDZ/CL Rwy 9 and 27 HIRL Rwy 9-27					
FAF to MAP 5.9 NM					
Knots	60	90	120	150	180
Min:Sec	5:54	3:56	2:57	2:22	1:58