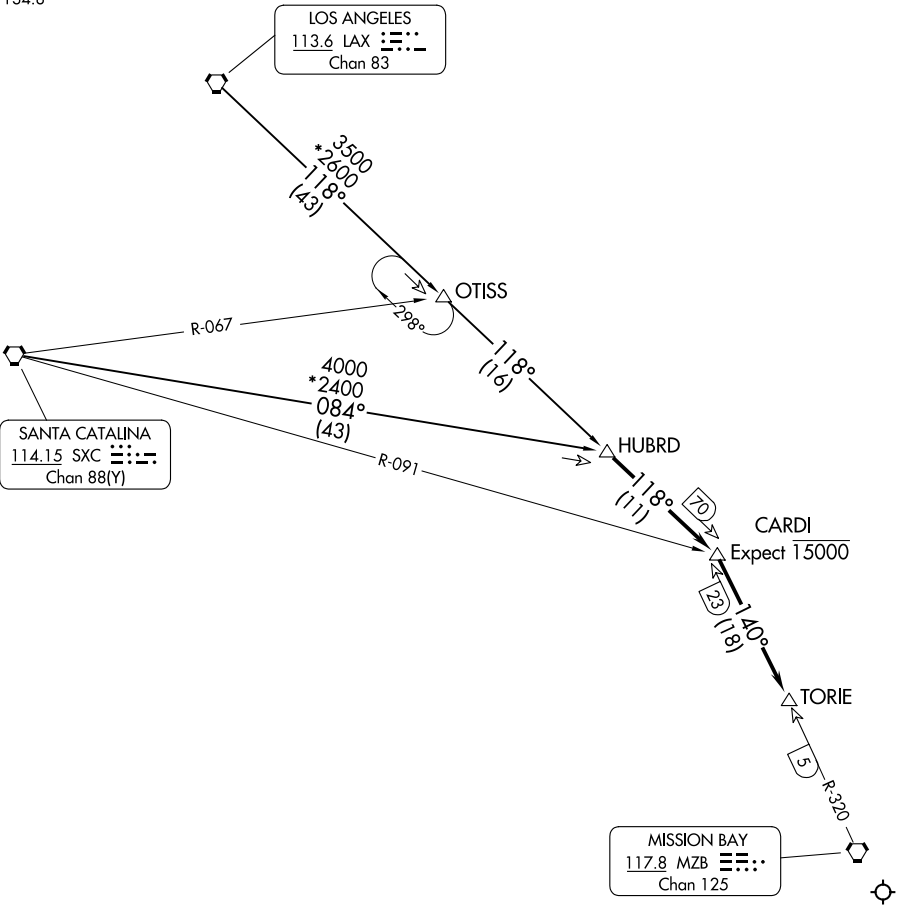


SOCAL APP CON
125.3 290.4
D-ATIS
134.8



NOTE: Chart not to scale.

ARRIVAL ROUTE DESCRIPTION

LOS ANGELES TRANSITION (LAX.HUBRD1): From over LAX VORTAC on LAX R-118 to OTISS INT, then on LAX R-118 to HUBRD INT. Thence

SANTA CATALINA TRANSITION (SXC.HUBRD1): From over SXC VORTAC on SXC R-084 to HUBRD INT. Thence

. . . . From over HUBRD INT via LAX R-118 to CARDI FIX via MZB R-320 to TORIE FIX. Expect vector to final approach course.

SW-3, 07 AUG 2025 to 04 SEP 2025

SW-3, 07 AUG 2025 to 04 SEP 2025