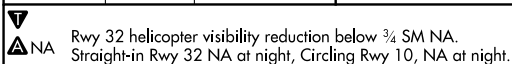
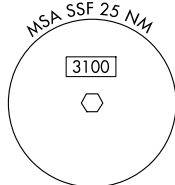
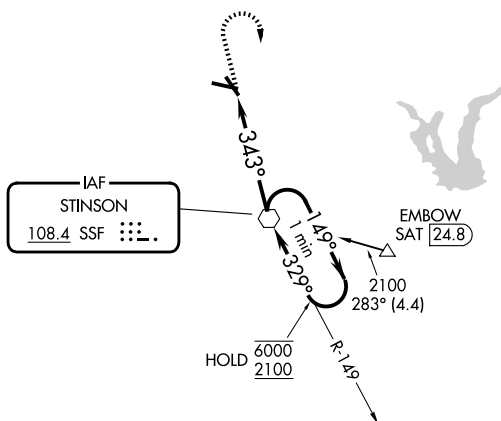


Rwy Ldg	3530
TDZE	571
Apt Elev	578

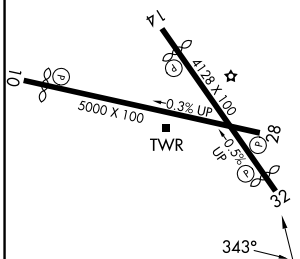
VOR RWY 32
STINSON MUNI (SSF)



MISSED APPROACH: Climb to 1400 then climbing right turn to 2500 direct SSF VOR and hold.

UNICOM
122.95

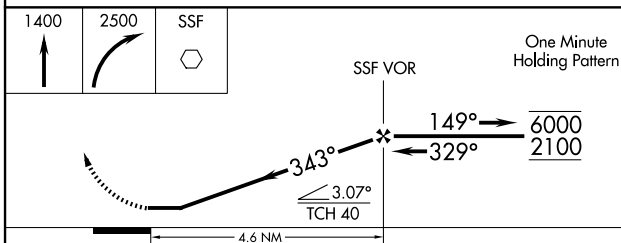
ELEV 578	D	TDZE 571
----------	----------	----------



REIL Rwys 10, 14, 28, and 32
MIRL Rwys 10-28 and 14-32

FAF to MAP 4.6 NM

Knots	60	90	120	150	180
Min:Sec	4:36	3:04	2:18	1:50	1:32



CATEGORY	A	B	C	D
S-32	1020-1 449 (500-1)		1020-1 ³ / ₈ 449 (500-1 ³ / ₈)	NA
CIRCLING	1040-1 462 (500-1)	1120-1 542 (600-1)	1260-2 682 (700-2)	NA