

APP CRS  
337°

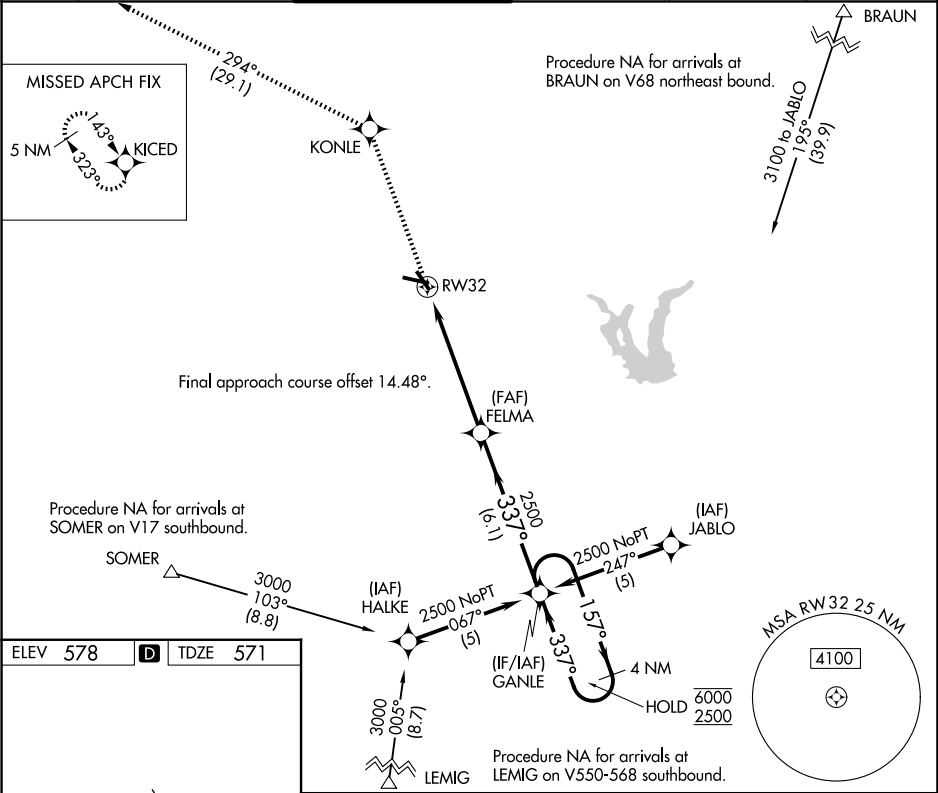
Rwy Ldg  
TDZE  
Apt Elev

3530  
571  
578

RNAV (GPS) RWY 32

STINSON MUNI (SSF)

RNP APCH-GPS.			MISSED APPROACH: Climb to 4100 direct KONLE and on track 294° to KICED and hold.		
Rwy 32 helicopter visibility reduction below ¾ SM NA. Circling Rwy 10 NA at night.					
ATIS 128.8	SAN ANTONIO APP CON 125.7 290.225	STINSON TOWER ★ 118.2 (CTAF) 379.9	GND CON 121.7 379.9	CLNC DEL 121.7 (When twr closed)	UNICOM 122.95



ELEV 578 TDZE 571		4100 KONLE KICED		VGSI and descent angles not coincident (VGSI 3.00/TCH 40).	
				4 NM Holding Pattern	
CATEGORY		A	B	C	D
LNAV MDA		1020-1	449 (500-1)	1020-1 3/8 449 (500-1 3/8)	NA
CIRCLING		1040-1 462 (500-1)	1120-1 542 (600-1)	1260-2 682 (700-2)	NA