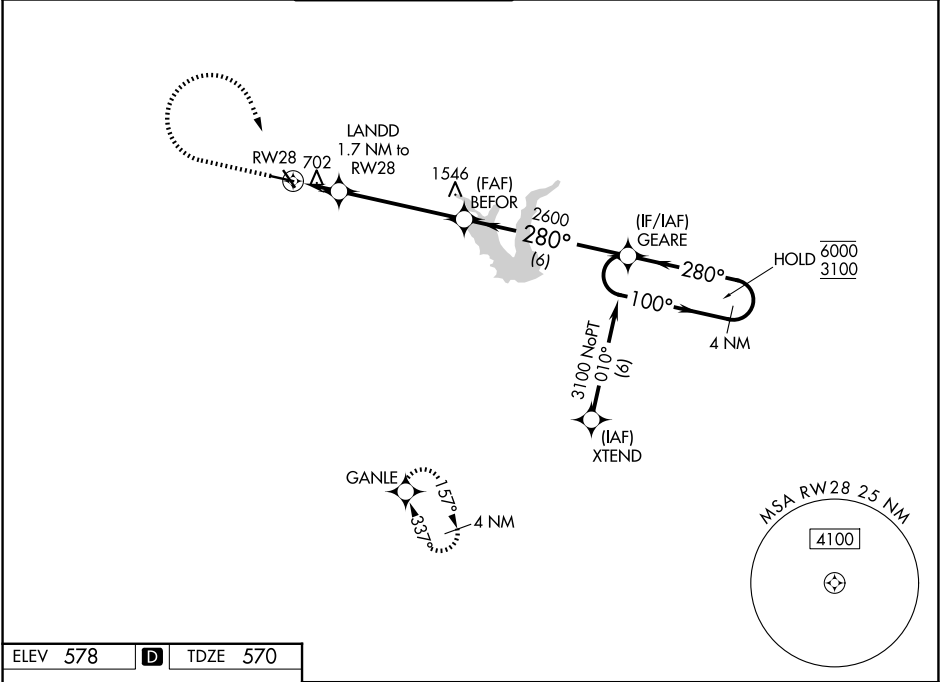


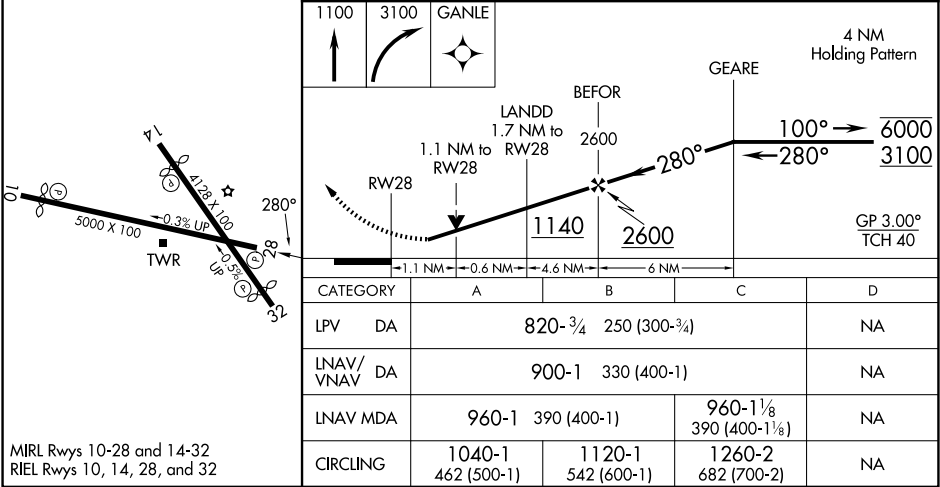
WAAS CH <b>42747</b> <b>W28A</b>	APP CRS <b>280°</b>	Rwy Ldg TDZE <b>570</b> Apt Elev <b>578</b>
--	------------------------	---

RNAV (GPS) RWY 28  
STINSON MUNI (SSF')

RNP APCH - GPS.				MISSED APPROACH: Climb to 1100 then climbing right turn to 3100 direct GANLE and hold.	
⚠ Circling Rwy 10 NA at night. Rwy 28 helicopter visibility reduction below ¾ SM NA. For uncompensated Baro-VNAV systems, LNAV/VNAV NA below -4°C or above 54°C.					
ATIS 128.8	SAN ANTONIO APP CON 125.7 290.225	STINSON TOWER★ 118.2(CTAF) 379.9	GND CON 121.7 379.9	CLNC DEL 121.7 (When twr closed)	UNICOM 122.95



ELEV <b>578</b>	<b>D</b>	TDZE <b>570</b>
-----------------	----------	-----------------



STINSON MUNI (SSF')  
RNAV (GPS) RWY 28