

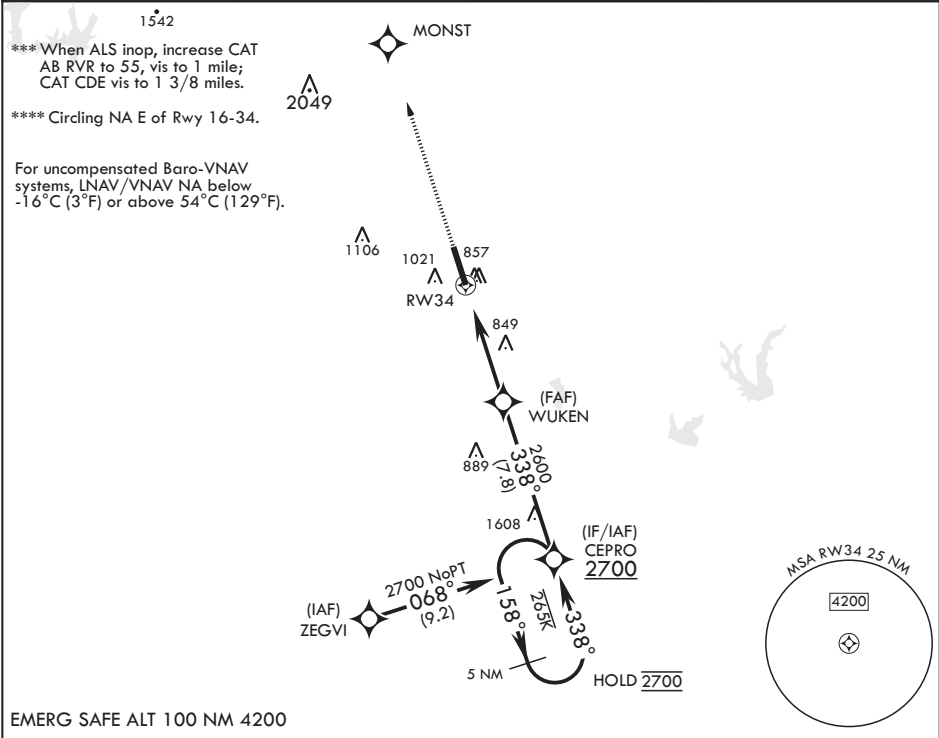
WAAS CH 65364 W34A	APCH CRS 338°	Rwy ldg TDZE Arprt Elev	11,550 660 690
--	-------------------------	-------------------------------	---

AL-371 (USAF)

KELLY FLD (KSKF)

RNP APCH * When ALS inop, increase RVR to 40, vis to 3/4 miles. ** When ALS inop, increase vis to 1 3/8 miles.	ALSF-1 	MISSED APPROACH: Climb to 3000 direct MONST. Expect ATC instructions.
--	------------	---

ATIS 120.45 273.5	SAN ANTONIO APP CON 118.05 353.5	KELLY TOWER 124.3 322.35	GND CON 121.8 289.4
-----------------------------	--	------------------------------------	-------------------------------



3000	MONST	VGSI and descent angles not coincident (VGSI Angle 3.02/TCH 93).	CEPRO 158°	5 NM Holding Pattern	ELEV 690	TDZE 660
CATEGORY	A	B	C	D	E	
LPV DA*	860/24		200	(200-½)		
LNAV/VNAV DA**	1120/45		460	(500-¾)		
LNAV MDA***	1120/24 460 (500-½)		1120/45 460	(500-¾)		
CIRCLING****	1200-1 510 (600-1)	1280-1 590 (600-1)	1340-1 650 (700-1¼)	1400-2 710 (800-2¼)	1900-3 1210 (1300-3)	