
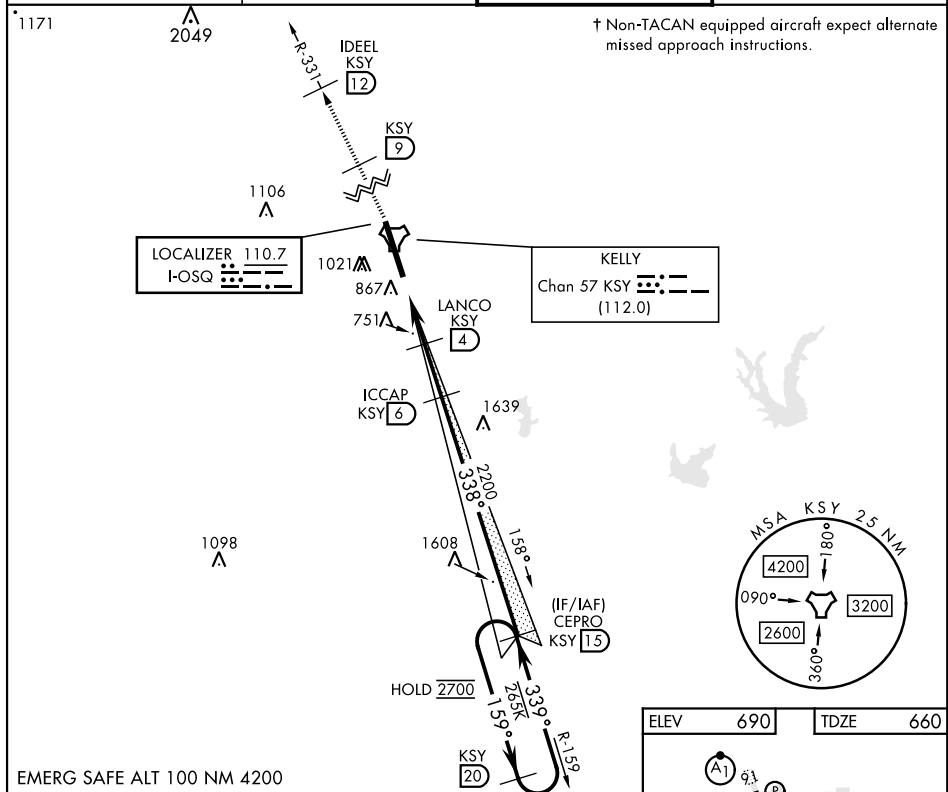
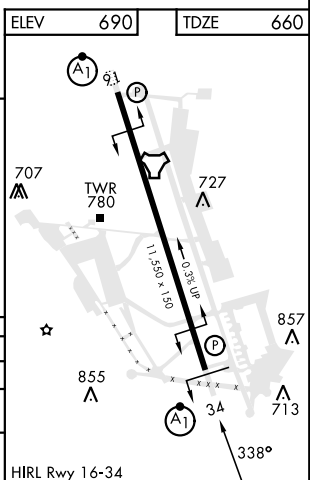


## ILS or LOC/DME Y RWY 34

LOC LOSQ <b>110.7</b>	APCH CRS <b>338°</b>	Rwy Idg <b>11,550</b> TDZE <b>660</b> Arpt Elev <b>690</b>	[USAF]	KELLY FLD (KSKF)
<p>▼ * When ALS inop, increase RVR to 40 and vis to ¾ mile.          ** When ALS inop, increase RVR to 55 and vis to 1 mile.          *** Circling not authorized E of Rwy 16-34.</p>			<p>ALSF-1  </p>	<p>† MISSED APPROACH: Climb to 2500 via KSY TACAN R-331 until 9 DME, cross 9 DME at 2500, then continue climb to 3000 to IDEEL/12 DME. Expect ATC instructions.</p>
<p>ATIS <b>120.45 273.5</b></p>		<p>SAN ANTONIO APP CON <b>118.05 353.5</b></p>	<p>TOWER <b>124.3 322.35</b></p>	<p>GND CON <b>121.8 289.4</b></p>

[illegible]

## ILS or LOC/DME Y RWY 34

SC-3, 07 AUG 2025 to 04 SEP 2025

SC-3, 07 AUG 2025 to 04 SEP 2025