

ILS or LOC/DME Y RWY 16

LOC I-SKF 110.1	APCH CRS 158°	Rwy ldg 11,550 TDZE 690 Arprt Elev 690
--------------------	------------------	--

[USAF]

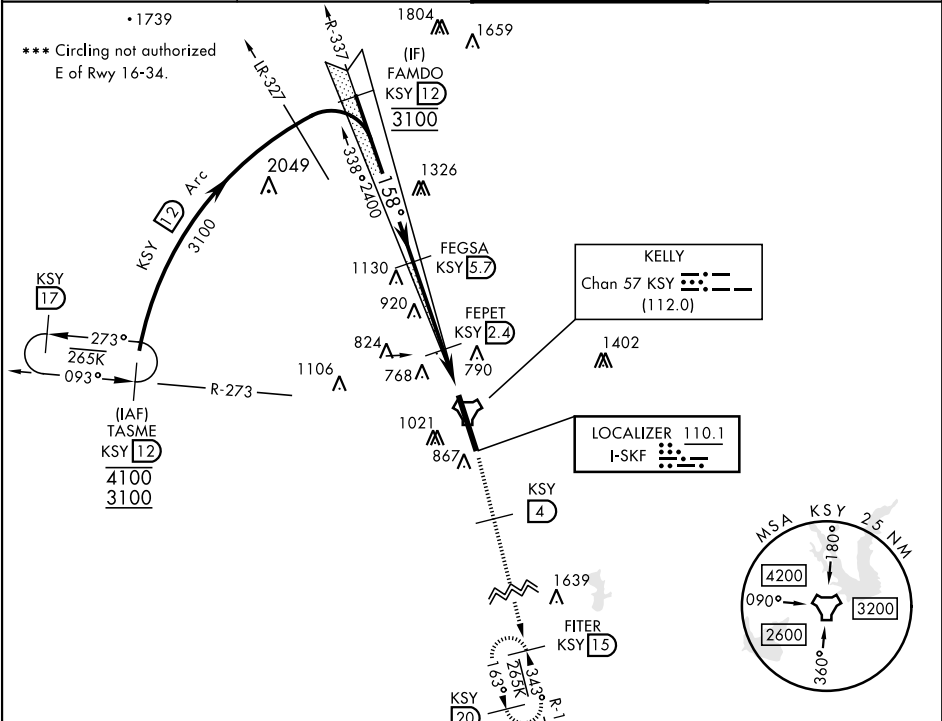
KELLY FLD (KSKF)

**⚠** \*When ALS inop, increase RVR to 40 and vis to ¾ mile.  
\*\*When ALS inop, increase CAT AB RVR to 55 and vis to 1 mile, CAT CDE RVR to 60 and vis to 1½ miles.

ALSF-1

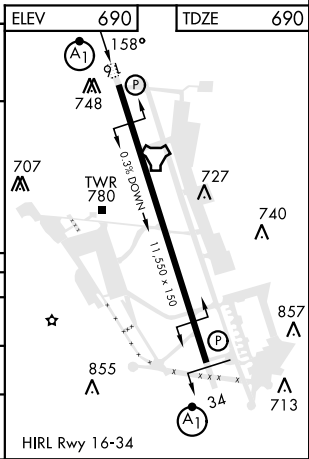
**MISSED APPROACH:** Climb to 2500 via KSY R-163 until 4 DME, then continue climb to 3000 to FITER/1.5 DME and hold. Non-TACAN equipped aircraft expect alternate missed approach instructions.

ATIS 120.45 273.5	SAN ANTONIO APP CON 118.05 353.5	TOWER 124.3 322.35	GND CON 121.8 289.4
----------------------	-------------------------------------	-----------------------	------------------------



EMERG SAFE ALT 100 NM 4200

FAMDO KSY 12 3100		VGSi and descent angles not coincident (VGSi angle 3.01/TCH 89).		2500 KSY R-163	3000 FITER KSY 15
FEGSA KSY 5.7 2400		FEPET KSY 2.4 1360		FEPET KSY 2.4 1360	
GS 3.00° TCH 57		3.3 NM		1.4 NM	
CATEGORY		A	B	C	D
S-ILS 16 *		890/24		200	(200-½)
S-LOC/DME 16 **		1080/24 390 (400-½)		1080/35	390 (400-¾)
*** CIRCLING		1200-1 510 (600-1)	1280-1 590 (600-1)	1340-1¾ 650 (700-1¾)	1900-3 1210 (1300-3)



ILS or LOC/DME Y RWY 16

SC-3, 07 AUG 2025 to 04 SEP 2025

SC-3, 07 AUG 2025 to 04 SEP 2025