
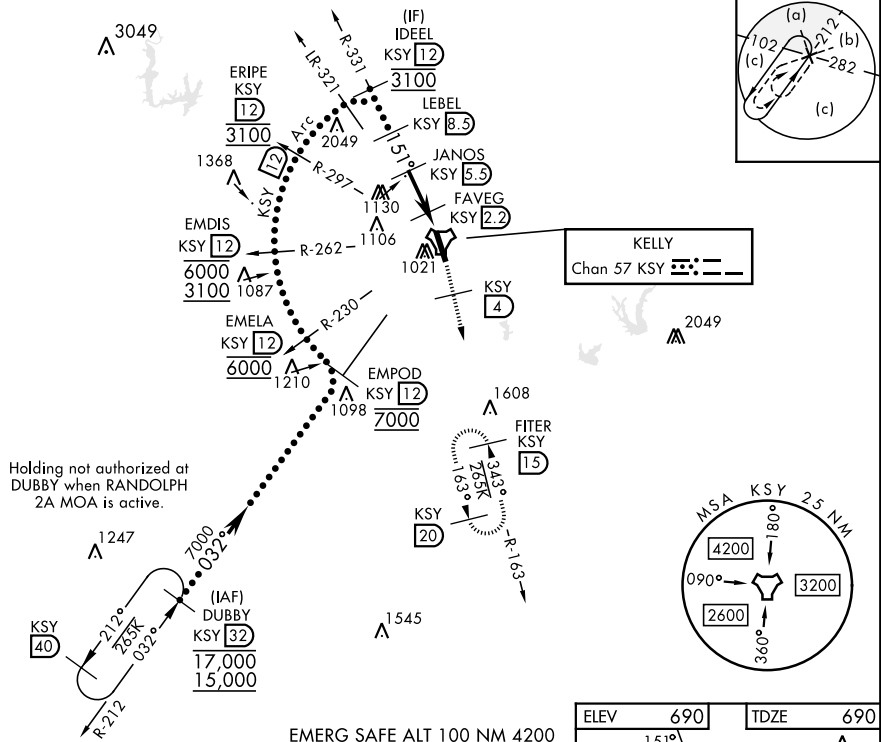


SAN ANTONIO, TEXAS

HI-TACAN Z RWY 16

TACAN KSY Chan 57	APCH CRS 151°	Rwy Idg 11,550 TDZE 690 Arpt Elev 690	[USAF]	KELLY FLD (KSKF)
▼ * When ALS inop, increase RVR to 60 and vis to 1 1/2 miles. ** Circling not authorized E of Rwy 16-34.			ALSF-1 	MISSED APPROACH: Climb to 2500 via KSY TACAN R-163 until 4 DME, then continue climb to 3000 to FITER/15 DME and hold.
ATIS 120.45 273.5		SAN ANTONIO APP CON 118.05 353.5		TOWER 124.3 322.35
				GND CON 121.8 289.4

1998



SC-3, 07 AUG 2025 to 04 SEP 2025

SC-3 07 AUG 2025 to 04 SEP 2025

VSI and descent angles not coincident (VSI angle 3.01/TCH 89).

IDEEL R-331 KSY 12 3100 2600 2500 1360 3.3 NM 1.2 NM 0.5 NM

LEBEL KSY 8.5 JANOS KSY 5.5 FAVEG KSY 2.2 FAVLA KSY 1.6 KSY TACAN

CATEGORY	C	D	E
S-16 *	1100/40	410	(500-34)
CIRCLING **	1340-134 650 (700-134)	1900-3 1210 (1300-3)	

HIRL Rwy 16-34

SAN ANTONIO, TEXAS

29°23'N-98°35'W

KELLY FLD (KSKE)

Amdt 2 17APR25

HI-TACAN Z RWY 16