

SAN ANTONIO, TEXAS

AL-369 (FAA)

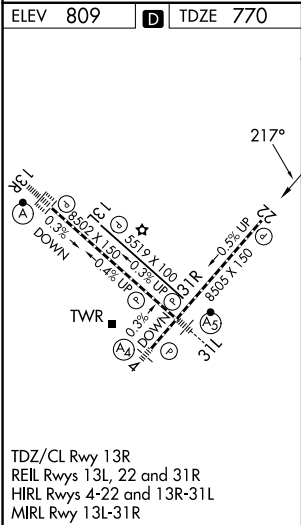
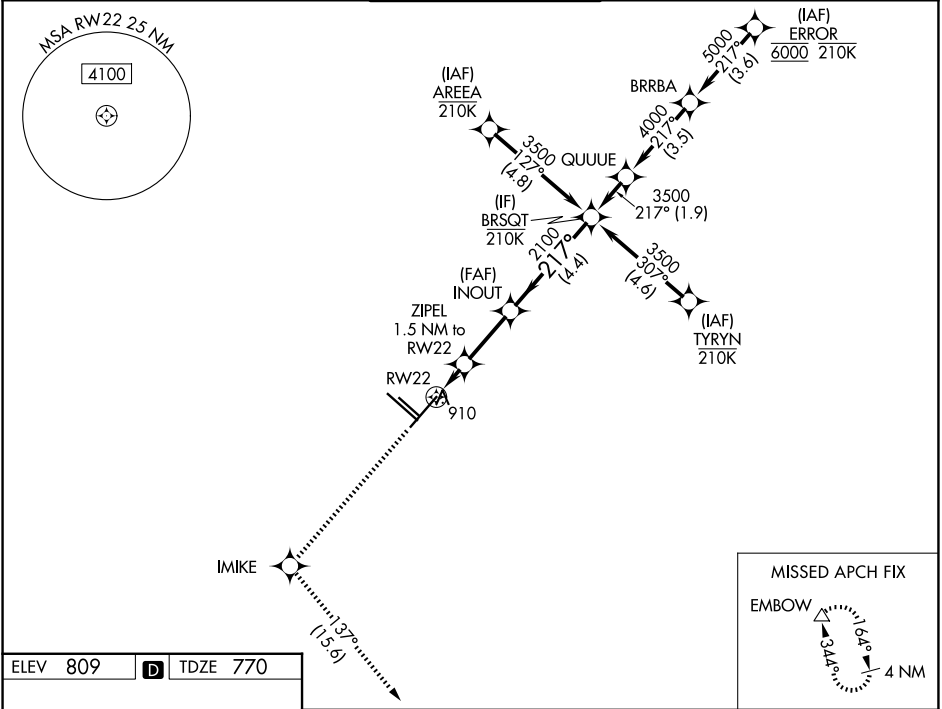
25219




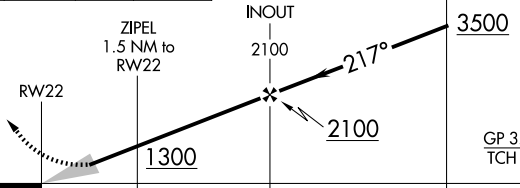
WAAS CH 69430 W22A	APP CRS 217°	Rwy Ldg TDZE 770 Apt Elev 809
--	------------------------	---

RNAV (GPS) Y RWY 22
SAN ANTONIO INTL (SAT)

RNP APCH - GPS.	MISSED APPROACH: Climb to 3100 direct IMIKE and on track 137° to EMBOW and hold.
Circling NA northwest of Rwy 4 and 13R. For uncompensated Baro-VNAV systems, LNAV/VNAV NA below -5°C or above 54°C.	

D-ATIS 118.9	SAN ANTONIO APP CON 125.1 307.0	SAN ANTONIO TOWER 119.8 257.8	GND CON 121.9 348.6	CLNC DEL 126.7	CPDLC
------------------------	---	---	-------------------------------	--------------------------	-------



3100	IMIKE	fr 137°	EMBOW	VGSI and RNAV glidepath not coincident (VGSI Angle 3.00/TCH 85).		
						
CATEGORY	A		B		C	D
LPV	DA	970-3/4		200 (200-3/4)		
LNAV/VNAV	DA	1220-1 3/8		450 (500-1 3/8)		
LNAV	MDA	1220-1 450 (500-1)		1220-1 3/8 450 (500-1 3/8)		
CIRCLING	1280-1 471 (500-1)		1340-1 531 (600-1)		1420-1 3/4 611 (700-1 3/4)	1520-2 1/4 711 (800-2 1/4)

SAN ANTONIO, TEXAS
Amdt 3 25JAN24

29°32'N-98°28'W

SAN ANTONIO INTL (SAT)
RNAV (GPS) Y RWY 22

SC-3, 07 AUG 2025 to 04 SEP 2025

SC-3, 07 AUG 2025 to 04 SEP 2025