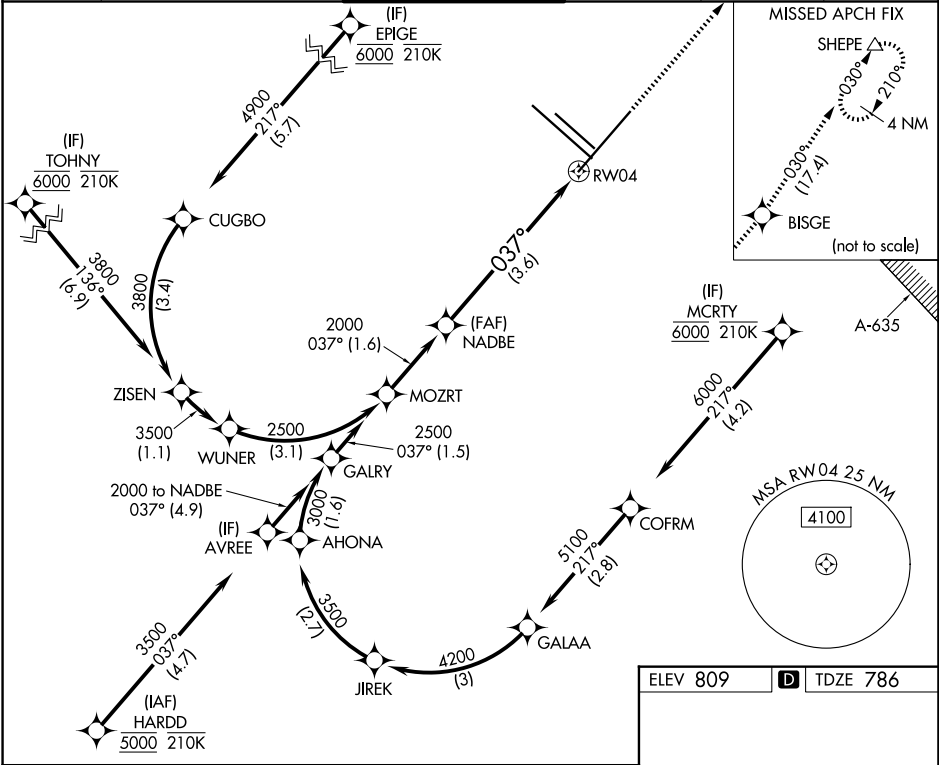


APP CRS	Rwy Ldg	8505
037°	TDZE	786
	Apt Elev	809

RNAV (RNP) Z RWY 4
SAN ANTONIO INTL (SAT)

RNP AR APCH - GPS.			MALS	MISSED APPROACH: Climb to 3500 direct BISGE and track 030° to SHEPE and hold.	
▼ For uncompensated Baro-VNAV systems, procedure NA below -5°C or above 54°C.			Ⓜ		
D-ATIS	SAN ANTONIO APP CON	SAN ANTONIO TOWER	GND CON	CLNC DEL	CPDLC
118.9	125.1 307.0	119.8 257.8	121.9 348.6	126.7	



VGSI and RNAV glidepath not coincident (VGSI Angle 3.00/TCH 79).				3500 ↑	BISGE ✦	tr 030°	SHEPE △
NADBE 2000				See planview for multiple IF locations.			
2000							
GP 3.00° TCH 56				RW04			
				3.6 NM			
CATEGORY	A	B	C	D			
RNP 0.15 DA	1167/45		381 (400-7%)				
RNP 0.30 DA	1286/60		500 (500-1¼)				
AUTHORIZATION REQUIRED							

