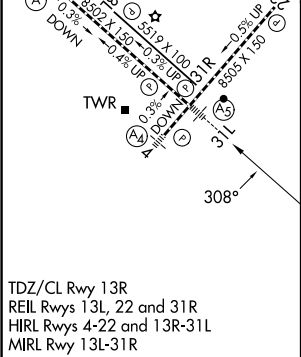
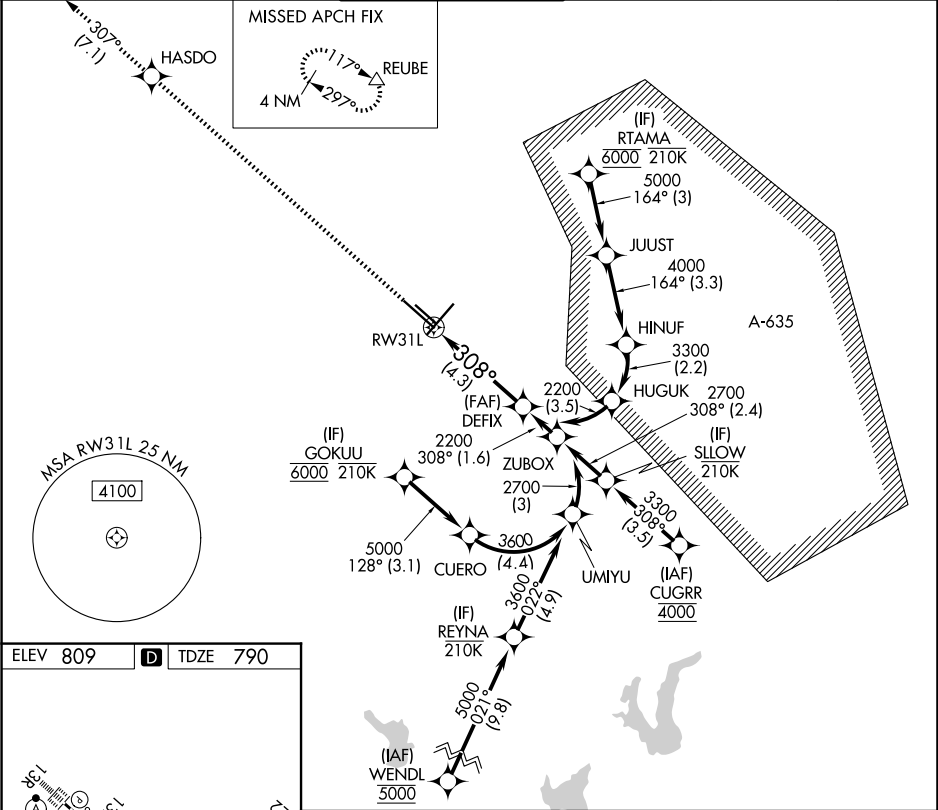


APP CRS	Rwy Ldg	8502
308°	TDZE	790
	Apt Elev	809

RNAV (RNP) Z RWY 31L
SAN ANTONIO INTL (SAT)

RNP AR APCH - GPS.			MALSR	MISSED APPROACH: Climb to 4200 direct HASDO and track 307° to REUBE and hold.	
For uncompensated Baro-VNAV systems, procedure NA below -5°C or above 54°C. For inop ALS, increase RNP 0.15 all Cats visibility to RVR 5500, increase RNP 0.30 all Cats visibility to RVR 6000.					
D-ATIS	SAN ANTONIO APP CON	SAN ANTONIO TOWER	GND CON	CLNC DEL	CPDLC
118.9	125.1 307.0	119.8 257.8	121.9 348.6	126.7	



4200	HASDO	REUBE	VGSi and RNAV glidepath not coincident (VGSi Angle 3.00°/TCH 82).
↑			DEFIX
See planview for multiple IF locations.			
CATEGORY	A	B	C
RNP 0.15 DA	1144/30	354 (400-%)	
RNP 0.30 DA	1200/40	410 (400-¾)	
AUTHORIZATION REQUIRED			