

APP CRS	Rwy Ldg	8502
128°	TDZE	809
	Apt Elev	809

RNAV (RNP) Z RWY 13R
SAN ANTONIO INTL (SAT)

RNP AR APCH - GPS

T For uncompensated Baro-VNAV systems, procedure NA below -5°C or above 54°C. For inop ALS, increase RNP 0.3 all Cats visibility to RVR 6000.

ALSF-2



MISSED APPROACH: (Do not exceed 210K until POYIG) Climb to 3100 on track 128° to POYIG and track 171° to EMBOW and hold.

D-ATIS
118.9

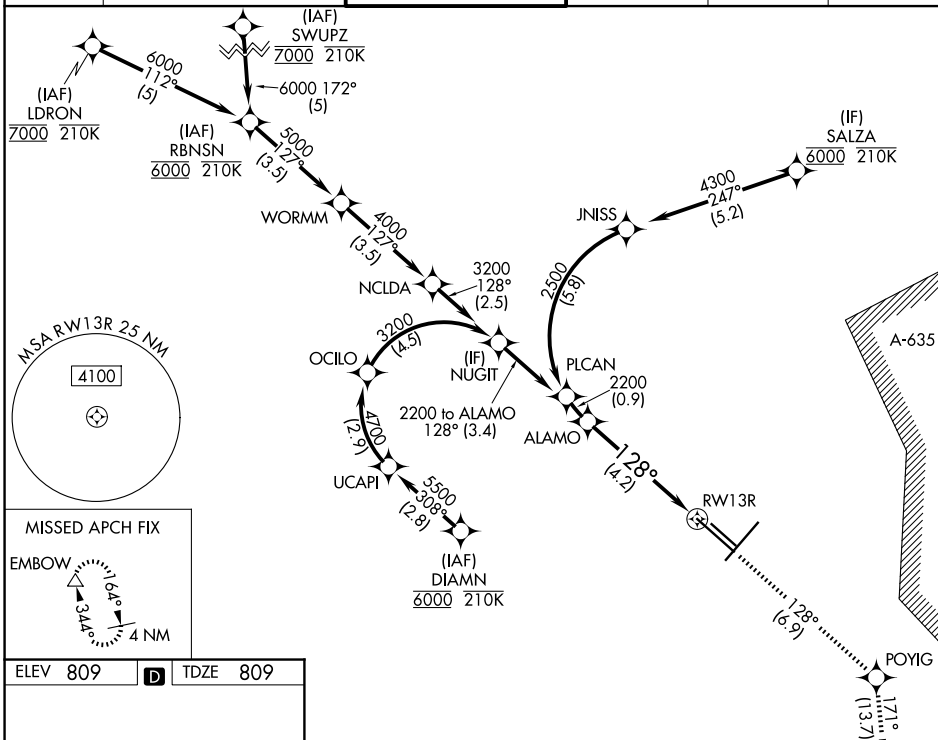
SAN ANTONIO APP CON
125.1 307.0

SAN ANTONIO TOWER
119.8 257.8

GND CON
121.9 348.6

CLNC DEL
126.7

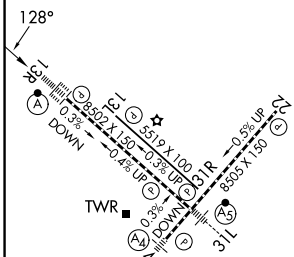
CPDLC



ELEV 80

D

TDZE 809



VGSI and RNAV glidepath not coincident
(VGSI Angle 3.00/TCH 75).

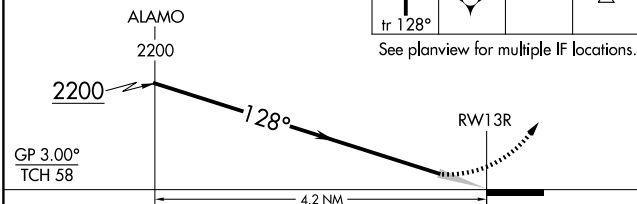
3100

POYIG

--	--

MBOW

See planview for multiple IF locations.



GP 3.00°
TCH 58

CATEGORY

A

1

□

RNP 0.15 DA

1137/26 328 (400-1/2)

RNP 0.30 DA

1218/40 409 (500-3/4)

AUTHORIZATION REQUIRED

SAN ANTONIO, TEXAS

Amdt 1 25JAN24

SAN ANTONIO INTL (SAT)

29°32'N-98°28'W

RNAV (RNP) Z RWY 13R