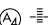

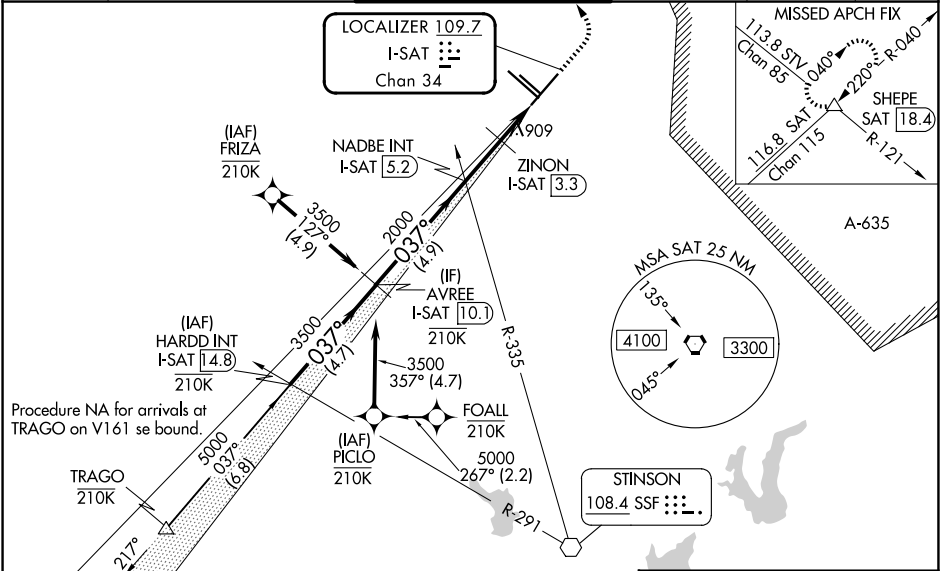


LOC/DME I-SAT 109.7 Chan 34	APP CRS 037°	Rwy Ldg TDZE 786 Apt Elev 809
---	------------------------	---

ILS or LOC RWY 4
SAN ANTONIO INTL (SAT)

RNP APCH-GPS. From TRAGO or PICLO or FRIZA.		MALS 	MISSED APPROACH: Climb to 1700 then climbing left turn to 3500 on heading 025° and on SAT VORTAC R-040 to SHEPE INT/SAT 18.4 DME and hold.
Aircraft not GPS equipped - RADAR required for procedure entry.			
 NA	Circling NA northwest of Rwy's 4 and 13R. Autopilot coupled approach NA below 1189. Inop table does not apply to S-ILS 4. For inop ALS, increase S-LOC 4 Cat C/D visibility to RVR 6000.		

D-ATIS 118.9	SAN ANTONIO APP CON 125.1 307.0	SAN ANTONIO TOWER 119.8 257.8	GND CON 121.9 348.6	CLNC DEL 126.7	CPDLC
------------------------	---	---	-------------------------------	--------------------------	-------



VGSi and ILS glidepath not coincident (VGSi Angle 3.00/TCH 79).					ELEV 809	TDZE 786
<div>HARDD INT I-SAT 14.8</div> <div>AVREE I-SAT 10.1</div> <div>NADBE INT I-SAT 5.2</div> <div>ZINON I-SAT 3.3</div> <div>SAT R-040</div> <div>SHEPE</div>					TDZ/CL Rwy 13R	
<div>5000</div> <div>037°</div> <div>3500</div> <div>2000</div> <div>1200</div> <div>1700</div> <div>3500</div> <div>hdg 025°</div> <div>See planview for multiple IF locations.</div>					REIL Rwys 13L, 22 and 31R	
<div>GS 3.00° TCH 56</div> <div>4.7 NM</div> <div>4.9 NM</div> <div>1.9 NM</div> <div>0.9 NM</div> <div>0.8 NM</div>					HIRL Rwys 4-22 and 13R-31L	
					MIRL Rwy 13L-31R	
CATEGORY	A	B	C	D		
S-ILS 4	986/40		200 (200-¾)			
S-LOC 4	1200/40	414 (400-¾)	1200/50	414 (400-1)		
CIRCLING	1280-1 471 (500-1)	1340-1 531 (600-1)	1420-1¾ 611 (700-1¾)	1520-2¼ 711 (800-2¼)		
ZINON FIX MINIMUMS (DME REQUIRED)						
S-LOC 4	1120/40		334 (400-¾)			
CIRCLING	1280-1 471 (500-1)	1340-1 531 (600-1)	1420-1¾ 611 (700-1¾)	1520-2¼ 711 (800-2¼)		
FAF to MAP 3.6 NM						
Knots		60	90	120	150	180
Min:Sec		3:36	2:24	1:48	1:26	1:12

SC-3, 07 AUG 2025 to 04 SEP 2025

SC-3, 07 AUG 2025 to 04 SEP 2025