

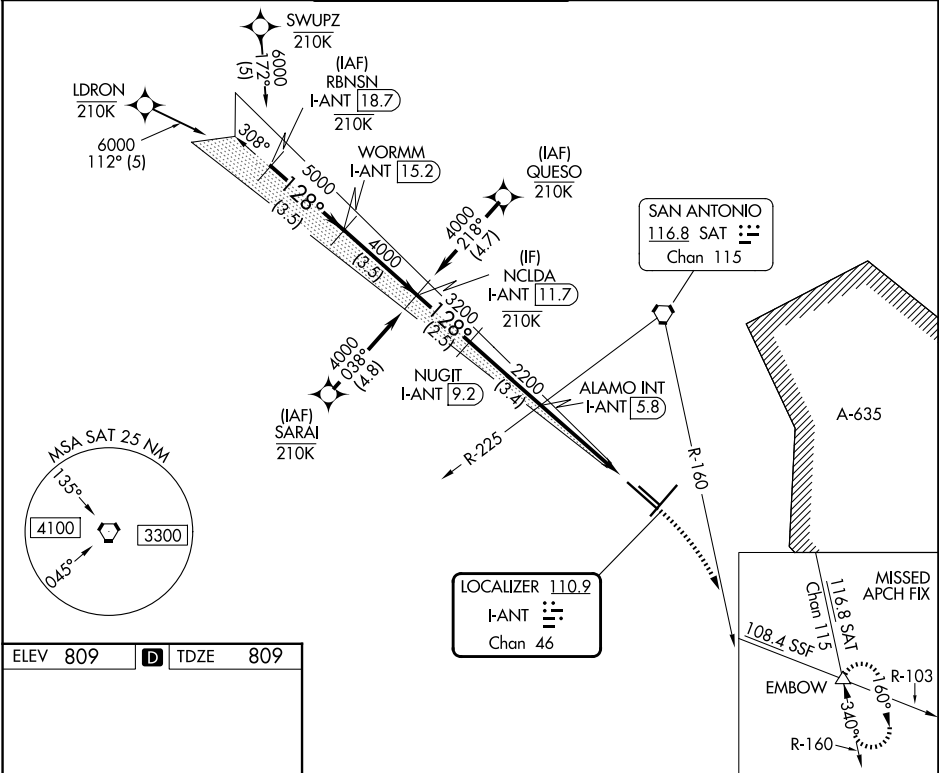
LOC/DME I-ANT <b>110.9</b> Chan <b>46</b>	APP CRS <b>128°</b>	Rwy 13R Ldg <b>8502</b> TDZE <b>809</b> Apt Elev <b>809</b>
---	------------------------	---

ILS RWY 13R (CAT II)  
SAN ANTONIO INTL (SAT)

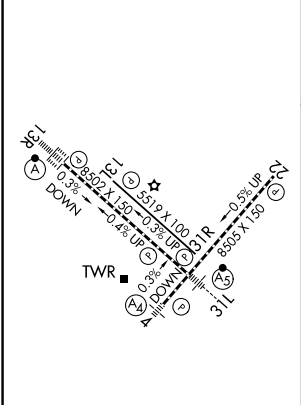
RNP APCH-GPS. From LDRON, SWUPZ, SARAI, QUESO.
RNAV 1-GPS or RADAR required for procedure entry. DME required.

ALSIF-2 	MISSED APPROACH: Climb to 3100 on heading 128° and SAT VORTAC R-160 to EMBOW INT and hold.
-------------	--

D-ATIS <b>118.9</b>	SAN ANTONIO APP CON <b>125.1 307.0</b>	SAN ANTONIO TOWER <b>119.8 257.8</b>	GND CON <b>121.9 348.6</b>	CLNC DEL <b>126.7</b>	CPDLC
------------------------	---	---	-------------------------------	--------------------------	-------



ELEV <b>809</b>	<b>D</b>	TDZE <b>809</b>
-----------------	----------	-----------------



TDZ/CL Rwy 13R  
REIL Rwy 13L, 22 and 31R  
HIRL Rwy 4-22 and 13R-31L  
MIRL Rwy 13L-31R

VGSI and ILS glidepath not coincident (VGSI Angle 3.00/TCH 75).			
NCLDA I-ANT <b>11.7</b> 4000	NUGIT I-ANT <b>9.2</b>	ALAMO INT I-ANT <b>5.8</b> 2200	3100 hdg 128°
GS 3.00° TCH 58			
2.5 NM 3.4 NM 4.2 NM 1.195 NM			
CATEGORY	A	B	C D
S-ILS 13R	RA 104/12 100 DA 909		

CATEGORY II ILS - SPECIAL AIRCREW  
& AIRCRAFT CERTIFICATION REQUIRED