

CENTERPOINT THREE ARRIVAL

SAN ANTONIO, TEXAS

SC-3, 07 AUG 2025 to 04 SEP 2025

RADAR required

SAN ANTONIO APP CON
125.1 307.0 (Rwys 13R and 22)
125.7 290.225 (Rwys 4 and 31L)
KENDALL ATIC +

SAT D-ATIS

SKF ATIS

120.45 273.5
SSF ATIS
128.8

FOR STOCKION
116.9 FST
Chan 116

H18C
 *5500
 096°
 (161)

ROCKSPRINGS
114.55 RSG $\frac{\dots}{\dots}$
Chan 92 (Y)

ARRIVAL ROUTE DESCRIPTION

FORT STOCKTON TRANSITION (FST.CS13): From over FST VORTAC on FST R-096 and CSI R-280 to CSI VORTAC. Thence . . .

JUNCTION TRANSITION (JCT.CS13): From over JCT VORTAC on JCT R-134 and CSI R-314 to CSI VORTAC. Thence . . .

LANDING SAT RUNWAY 13R: From CSI VORTAC on CSI R-106 to cross LITE at 10000, then on CSI R-106 to cross RBNSN at 6000 and 210K. Expect ILS or LOC RWY 13R approach.

LANDING SAT RUNWAYS 4, 22, 31L/R: From CSI VORTAC on CSI R-106 to cross LITE at 10000, then on heading 130°. Expect RADAR vectors to final approach course.


LANDING SKF/SSF/RND: From CSI VORTAC on CSI R-106 to cross LITE at 10000, then on heading 130°. Expect RADAR vectors to final approach course.

JUNCTION
116.0 JCT
Chan 107

NOTE: SAT Rwy 13R: Expect to cross LITE at 250K.

STONEWALL
113.8 STV :-:-
Chan 85

RBNSN
6000 210K
SAT Ldg Rwy 13R

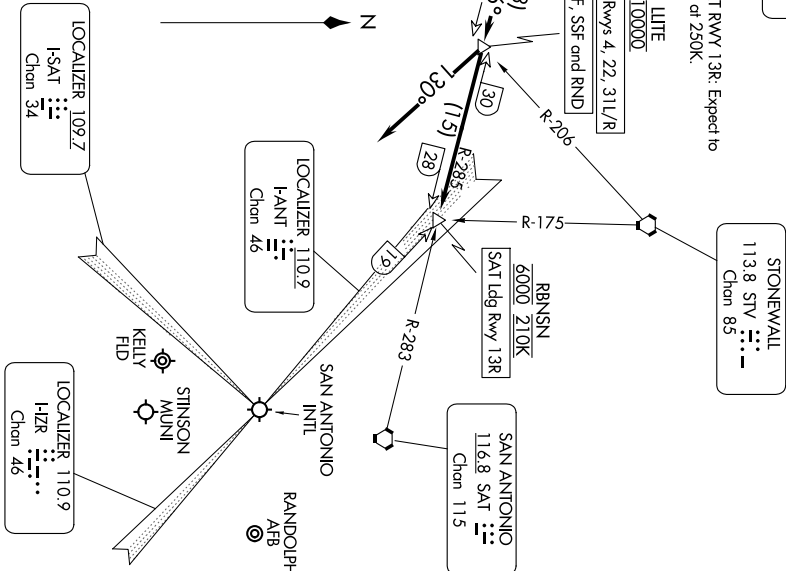
SAN ANTONIO
116.8 SAT 
Chan 115

LOCALIZER 110.9
I-ANT 110.9
Chan 46

LOCALIZER 109.7
I-SAT \therefore
Chan 34

LOCALIZER 110.9
I-IZR
Chan 46

NOTE: Chart not to scale



CENTERPOINT THREE ARRIVAL

SAN ANTONIO, TEXAS