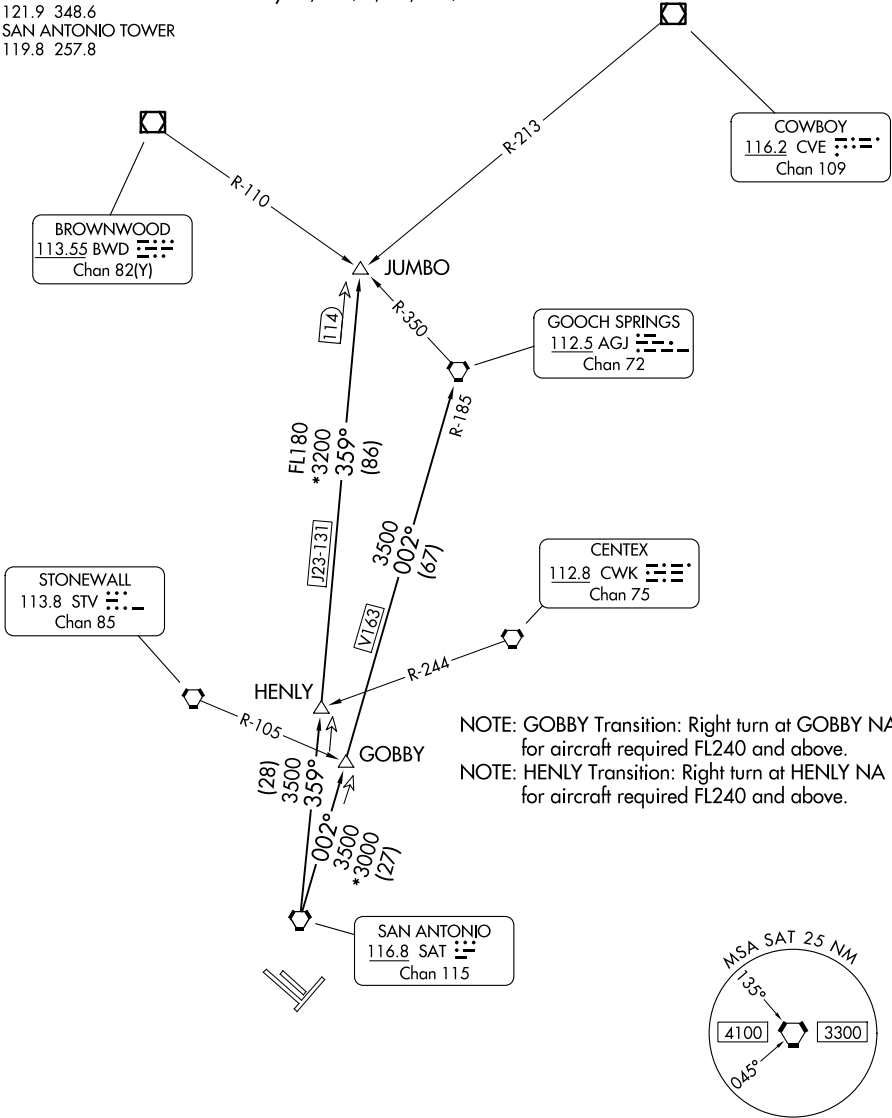


SAN ANTONIO DEP CON
125.1 307.0 (4, 22, 31)
127.1 269.1 (13)
D-ATIS
118.9
CLNC DEL
126.7
CPDLC
GND CON
121.9 348.6
SAN ANTONIO TOWER
119.8 257.8

RADAR required.

TOP ALTITUDE:
5000

TAKEOFF MINIMUMS
Rwys 4, 13L/R, 22, 31L/R: Standard.



NOTE: Chart not to scale. (CONTINUED ON FOLLOWING PAGE)