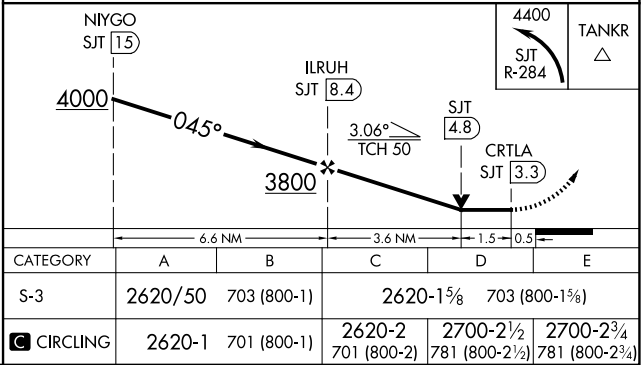
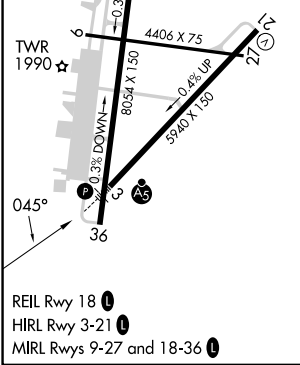
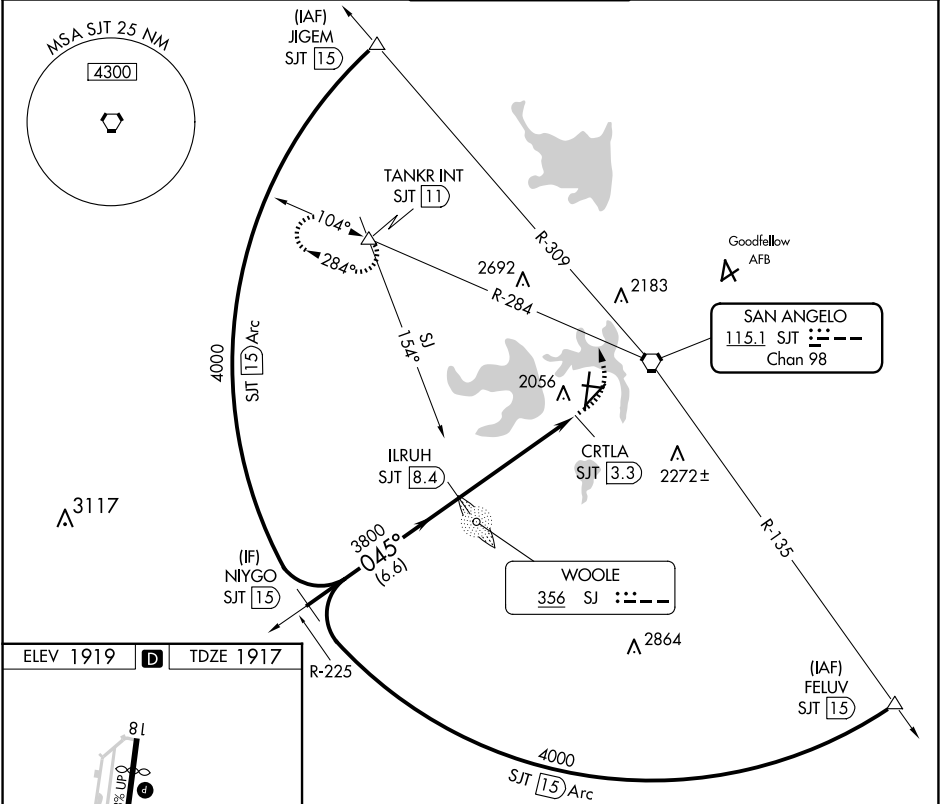


VORTAC SJT	APP CRS	Rwy Idg	5940
115.1	045°	TDZE	1917
Chan 98		Apt Elev	1919

VOR Y or TACAN Y RWY 3
SAN ANGELO RGNL/MATHIS FLD (SJT)

DME required.	MALSR	MISSED APPROACH: Climbing left turn to 4400 on SJT VORTAC R-284 to TANKR INT/11 DME and hold, continue climb-in-hold to 4400.
Inop table does not apply to Cat A and B. Circling NA for Cat E west of Rwy 18-36. For inop ALS, increase Cat C-E visibility to 2 SM.		

ATIS	SAN ANGELO APP CON ★	MATHIS TOWER ★	GND CON	UNICOM
128.45 319.0	125.35 354.1	118.3 (CTAF) 0 284.7	121.9 348.6	122.95



SC-3, 07 AUG 2025 to 04 SEP 2025

SC-3, 07 AUG 2025 to 04 SEP 2025