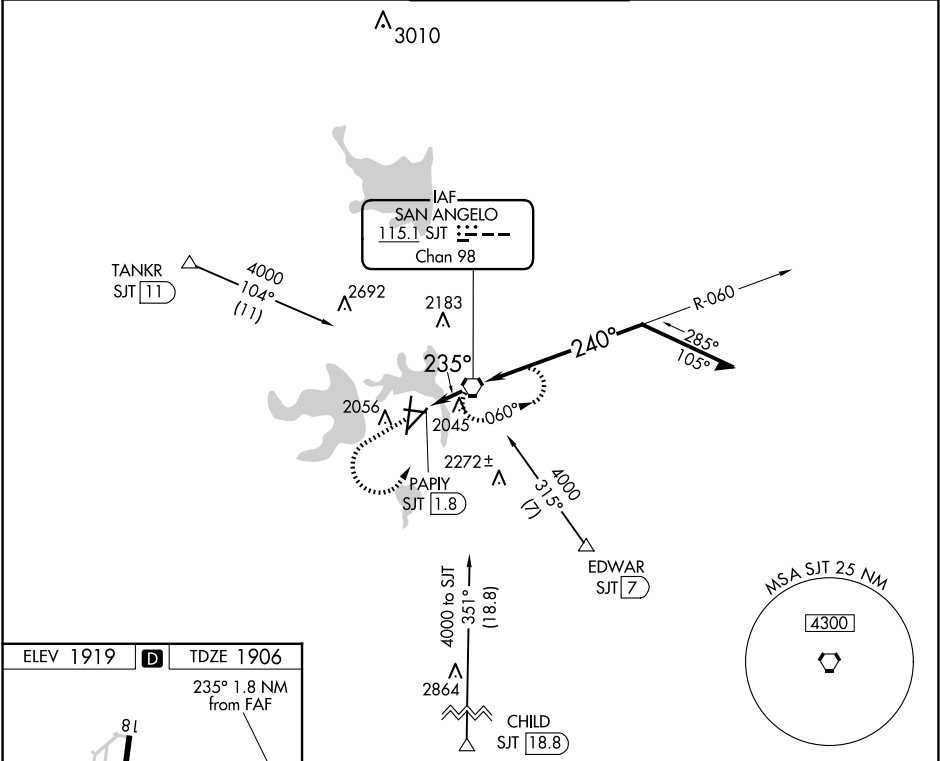



VORTAC SJT	APP CRS	Rwy Idg	5940
115.1	235°	TDZE	1906
Chan 98		Apt Elev	1919


VOR Y RWY 21
SAN ANGELO RGNL/MATHIS FLD (SJT)

ASR Circling NA for Cat D west of Rwy 18-36.	MISSED APPROACH: Climb to 4000, then left turn direct SJT VORTAC and hold.
---	--

ATIS 128.45 319.0	SAN ANGELO APP CON ★ 125.35 354.1	MATHIS TOWER ★ 118.3 (CTAF) 0 284.7	GND CON 121.9 348.6	UNICOM 122.95
----------------------	--------------------------------------	--	------------------------	------------------



ELEV 1919	D	TDZE 1906			
 <p>235° 1.8 NM from FAF</p> <p>81</p> <p>-0.3% UP</p> <p>4406 X 75</p> <p>8054 X 150</p> <p>0.4% UP</p> <p>5940 X 150</p> <p>-0.3% DOWN</p> <p>36</p> <p>TWR 1990</p> <p>2710</p> <p>REIL Rwy 18</p> <p>HIRL Rwy 3-21</p> <p>MRL Rwy 9-27 and 18-36</p> <p>FAF to MAP 1.8 NM</p>					
Knots	60	90	120	150	180
Min:Sec	1:48	1:12	0:54	0:43	0:36

4000 ↑		SJT 		VGSI and descent angles not coincident (VGSI Angle 3.00 /TCH 52).	
				SJT VORTAC	
				Remain within 10 NM	
PAPIY SJT 1.8		SJT 0.7		3.34° TCH 59	
1.1 NM		0.7 NM		235°	
				2600	
				060°	
				3800	
				240°	
				2600	
CATEGORY	A	B	C	D	
S-21	2300-1	394 (400-1)	2300-1½	394 (400-1½)	
CIRCLING	2360-1 441 (500-1)	2380-1 461 (500-1)	2500-1½ 581 (600-1½)	2580-2 661 (700-2)	

SC-3, 07 AUG 2025 to 04 SEP 2025

SC-3, 07 AUG 2025 to 04 SEP 2025