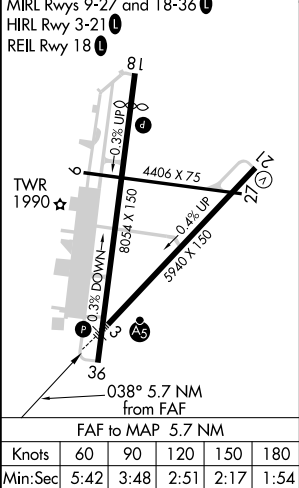
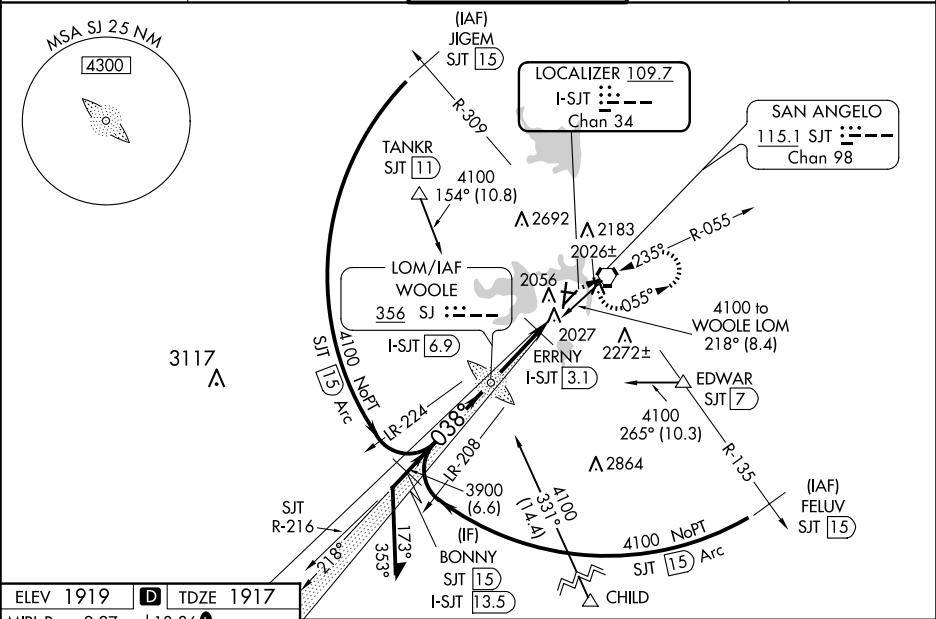


LOC/DME I-SJT	APP CRS	Rwy Idg	5940
109.7	038°	TDZE	1917
Chan 34		Apt Elev	1919

ILS Y or LOC Y RWY 3  
SAN ANGELO RGNL/MATHIS FLD (SJT)

ADF or DME required for procedure entry.	MALSR	MISSED APPROACH: Climb to 4000 then right turn direct SJT VORTAC and hold.
Autopilot coupled approach NA below 2685. For Inop ALS, increase S-ILS 3 Cat E visibility to RVR 4000, S-LOC 3 Cat C/D/E visibility to 2 SM. Circling NA for Cat E west of Rwy 18-36. ERRNY DME minimums: For Inop ALS, increase S-LOC 3 Cat C/D/E visibility to RVR 5500. # RVR 1800 authorized with use of FD or AP or HUD to DA.		

ATIS 128.45 319.0	SAN ANGELO APP CON ★ 125.35 354.1	MATHIS TOWER ★ 118.3 (CTAF) 284.7	GND CON 121.9 348.6	UNICOM 122.95
----------------------	--------------------------------------	--------------------------------------	------------------------	------------------



Use I-SJT DME when on the localizer course.				
Remain within 10 NM		SJ LOM I-SJT 6.9	ERRNY I-SJT 3.1	SJT
Cat E procedure turn NA.		*LOC only		
GS 3.00° TCH 51		*I-SJT 2.1 I-SJT 1.2		
CATEGORY	A	B	C	D E
S-ILS 3 #	2117/24 200 (200-1/2)			
S-LOC 3	2620/24	703 (800-1/2)	2620-1 3/8	703 (800-1 3/8)
CIRCLING	2620-1	701 (800-1)	2620-2 701 (800-2)	2700-2 3/4 781 (800-2 3/4)
ERRNY DME MINIMUMS				
S-LOC 3	2300/24	383 (400-1/2)	2300/35	383 (400-3/4)
CIRCLING	2360-1 441 (500-1)	2380-1 461 (500-1)	2500-1 1/2 581 (600-1 1/2)	2700-2 1/2 781 (800-2 1/2) 2700-2 3/4 781 (800-2 3/4)