

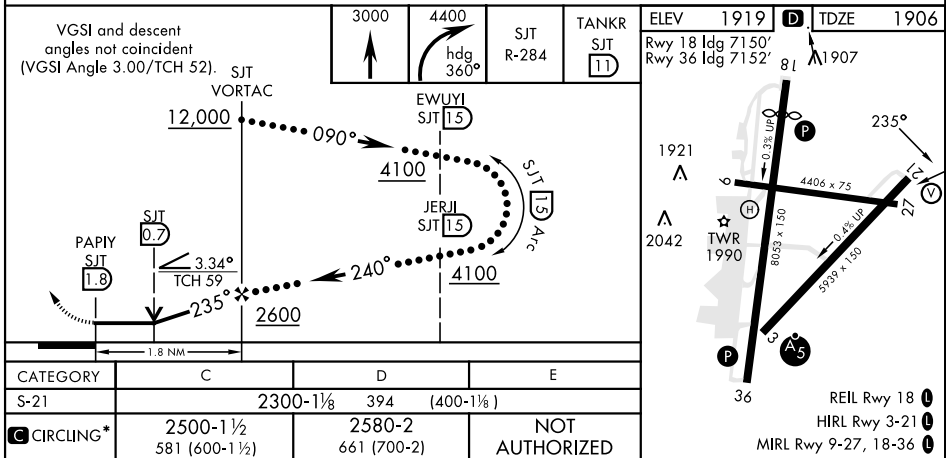
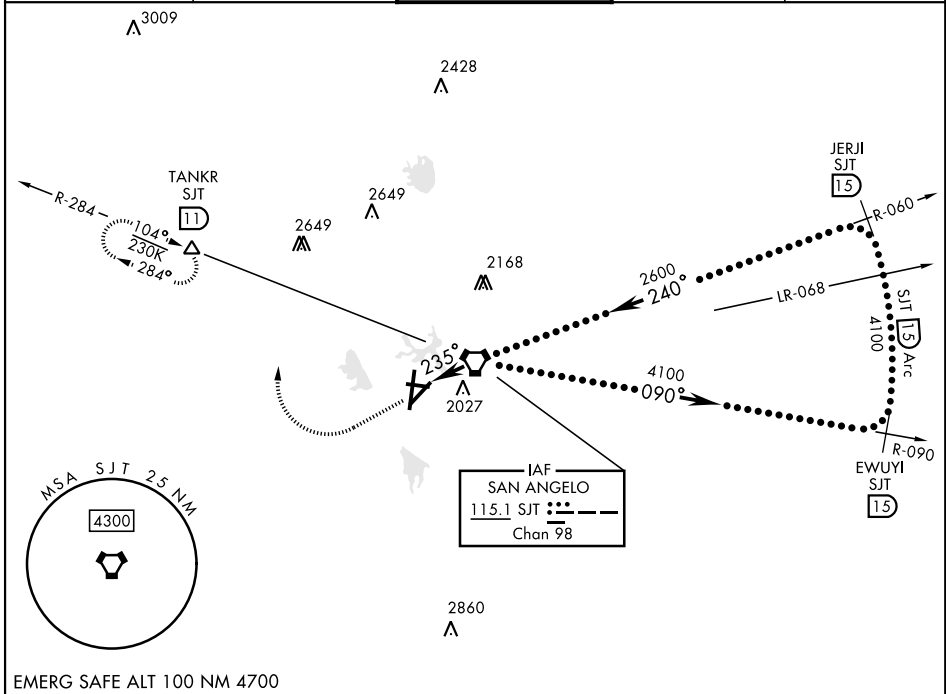
HI-VOR Z or TACAN RWY 21

VORTAC SJT 115.1 Chan 98	APCH CRS 235°	Rwy ldg 5939 TDZE 1906 Arpt Elev 1919
--------------------------------	------------------	--

[USAF]

SAN ANGELO RGNL/MATHIS FLD (KSJT)

DME required		MISSED APPROACH: Climb to 3000 then climbing right turn to 4400 on heading 360° and SJT VORTAC R-284 to TANKR INT/11 DME and hold, continue climb-in-hold to 4400.		
*Circling not authorized for CAT D W of Rwy 18-36.				
ATIS 128.45 319.0	SAN ANGELO APP CON ★ 125.35 354.1	MATHIS TOWER ★ 118.3 (CTAF) 284.7	GND CON 121.9 348.6	UNICOM 122.95



HI-VOR Z or TACAN RWY 21