

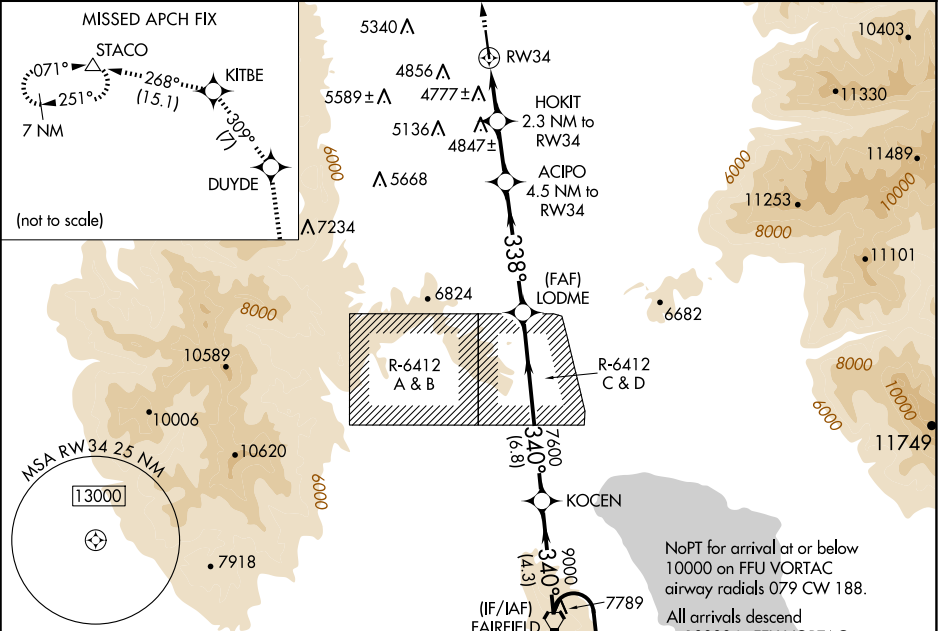
WAAS CH <b>82740</b> <b>W34A</b>	APP CRS <b>338°</b>	Rwy Ldg TDZE Apt Elev <b>4606</b>
--	------------------------	---

RNAV (GPS) RWY 34

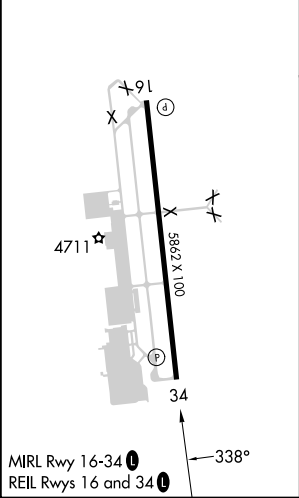
SOUTH VALLEY RGNL (SVR)

RNP APCH - GPS.	MISSED APPROACH: Climb to 9000 direct DUYDE and on track 309° to KITBE and on track 268° to STACO and hold.
VDP NA when using SLC altimeter setting. Baro-VNAV NA. When local altimeter setting not received, use SLC altimeter setting and increase all LPV DA to 4956 feet and all visibilities ½ SM. Increase LNAV/VNAV DA to 5159 feet and all visibilities ¼ SM. Increase all MDAs 80 feet and LNAV visibility Cat C/D ½ SM, and Circling visibility Cat B ¼ SM.	

AWOS-3PT <b>134.425</b>	SALT LAKE CITY APP CON <b>120.9 322.3</b>	CLNC DEL <b>127.0</b>	UNICOM <b>122.7 (CTAF) 0</b>
----------------------------	--	--------------------------	---------------------------------



ELEV <b>4606</b>	TDZE <b>4606</b>
------------------	------------------



9000	DUYDE	KITBE	STACO	VGSI and RNAV glidepath not coincident (VGSI Angle 3.00/TCH 40).
↑	tr 309°	tr 268°	△	
HOKIT 2.3 NM to RW34	ACIPO 4.5 NM to RW34	LODME	KOCEN FAIRFIELD FFU	7 NM Holding Pattern
1.3 NM to RW34	338°	340°	160°	12000
5380	6080	7600	9000	9000
1.3	1.1	2.2 NM	4.7 NM	6.8 NM
GP 3.00°	TCH 58			
CATEGORY	A	B	C	D
LPV DA	4881-7½	275 (300-7½)		
LNAV/VNAV DA	5084-1¾	478 (500-1¾)		
LNAV MDA	5040-1	434 (500-1)	5040-1¼	434 (500-1¼)
CIRCLING	5180-1 574 (600-1)	5360-1 754 (800-1)	5780-3 1174 (1200-3)	6040-3 1434 (1500-3)